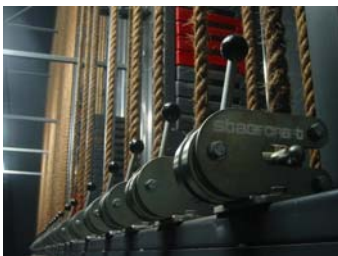
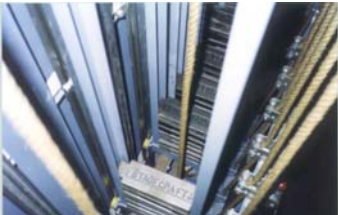


Company Profile—



Stagecraft is a private company owned and managed by its founder Rory Miller.

Stagecraft is an entertainment equipment supply company, engaged in the manufacture, hire, sales, distribution and installation of stage machinery, drapes, lighting grids, stage lighting, orchestra lifts, portable staging, sound and audio-visual equipment.

Stage Machinery: For over thirty years Stagecraft has built up a significant reputation for designing, manufacturing and installing automated and manually operated winches, counterweight flying systems, heavy duty drapes and track systems. The market for Stagecraft's products and expertise extends nationally and throughout much of Asia. Stagecraft has established clientele in Singapore, Malaysia, China, Brunei, Hong Kong, Thailand, Pakistan, India and Indonesia.

Stagecraft operates from its new, purposed built facility in Malaga, Perth Western Australia. This 1925m² floor area facility houses administration offices, design office, showroom, hire department, and fabrication, electronics and paint workshops all under one roof. Additionally its large loading bay has the capacity for four semi-trailers and is serviced by a fork-lift.

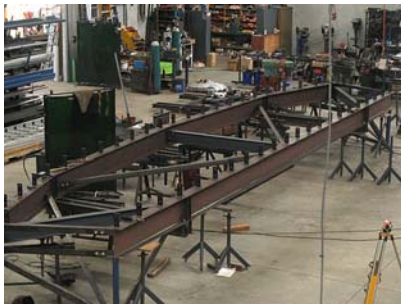
Stage Lighting AV & Audio: Stagecraft is a distributor for many international electronic /digital entertainment equipment manufacturers and has an expanding market in cinemas, theatres, education, clubs, concert and convention venues, places of worship and television studios.

Stagecraft has a growing involvement in a consultancy/designer capacity by clients and/or their architects to assist in venue and fit-out design from concept to completion

Resources—

PREMESIS

Stagecraft's new purpose built factory commenced operation in August 2008. With over 800m² of floor area dedicated to fabrication, plus a large loading bay, paint-shop and material storage areas, this facility is capable of a high through-put of custom built theatre machinery. To compliment this capability Stagecraft's design division employs the latest engineering design software to develop and refine its products.



PERSONNEL

Key Personnel

General Manager: Rory Miller

Rory's career spans 40 years in performing arts presentation and equipment design, manufacture and supply. As the founder and owner of Stagecraft Rory has supervised all of the counterweight and electric hoist rigging system installations in many significant national and off-shore venues. (see page 4)

Design consultant: Ken Rayner

Ken has spent forty years in performing arts as a designer, technician and production manager. He has a Master of Creative Arts (Theatre) degree from Wollongong University NSW. For five years Ken has been a staff member of Stagecraft in charge of design and drafting across the product range.

Project Manager: Michael Gaff

Has accumulation a formidable record of achievements in entertainment technology and project management during his nearly forty years of service in the industry.

Manufacturing and Installation Personnel

Stagecraft has a number of key long-term employees across a range of trades from welding to electronics who between them have accrued a wealth of expertise in this specialized field.

Projects—

Selected completed and current projects demonstrating Stagecraft's experience and expertise:

- St Hilda's Anglican School for Girls
- John Paul College, Kalgoorlie
- Perth Arena
- Kamaroi Steiner School—Sydney
- Woodvale Baptist Church
- Hamer Hall—Victorian Arts Centre Melbourne
- Khalsa Heritage Centre—India
- Albany Entertainment Centre
- Genting Highland Resort Casino—Malaysia
- Indoor Sport Stadium—Brunei
- Tamaseel Theatre—Lahore Pakistan
- Perth Convention and Exhibition Centre
- Adelaide Entertainment Centre
- Australian Broadcasting Corporation television studios—
 - ◇ Sydney
 - ◇ Melbourne
 - ◇ Perth
- Foxtel—Television Studio Sydney
- Fox Sports Television Studio Sydney
- Channel 7 Television Studio Sydney

Stagecraft's contribution to these projects ranges in value up to \$AUD 2,500,000 and includes:

- | | |
|--|---|
| • Counterweight rigging systems | • Theatre Communication Systems |
| • Electric hoist rigging systems | • Design Advice/ Consultancy |
| • Curtains, curtain tracks and accessories | • Custom designed rigging systems |
| • Complete Stage Lighting Systems | • Forestage / orchestra pit lifts |
| • Complete Stage Audio Systems | • Stagecraft AirFlo flooring systems |



CONTENTS

SECTION	PAGE
Masking	1
Curtain Hand Winder	3
Scenery Masking Flats	4
Cyclorama Floor Tensioner	5
Cyclorama Side Tensioner	6
Auto Pole Support System	7
Studio Track - 200	8
Track Crossover Switch	9
Track Junction Switch	10
Compact Track - 300	11
Theatre Track- 100	12
Self Locking Swivel Arm	15
# Drive Curtain Motor	1
SLX by Stagecraft- Lighting Bar	19
Plug Strip - Fixed Lighting Bar	22
Winched Lighting Bars	23
Pile Wind Winch	24
Line Drive Hoist	25
Counterweight Flying System	26
Clamps	28
Media Studio	29
Patch Panel (Lighting)	30

SECTION	PAGE
Stage Boxes	31
AirFlo Floor	32
Rostra Staging	33
Rostra Dolly	34
Choir Rostrum	35
Modular Stage System	36
Portable Wardrobe Rack	37
Exhibition Barriers	38
Ballet Barre	42

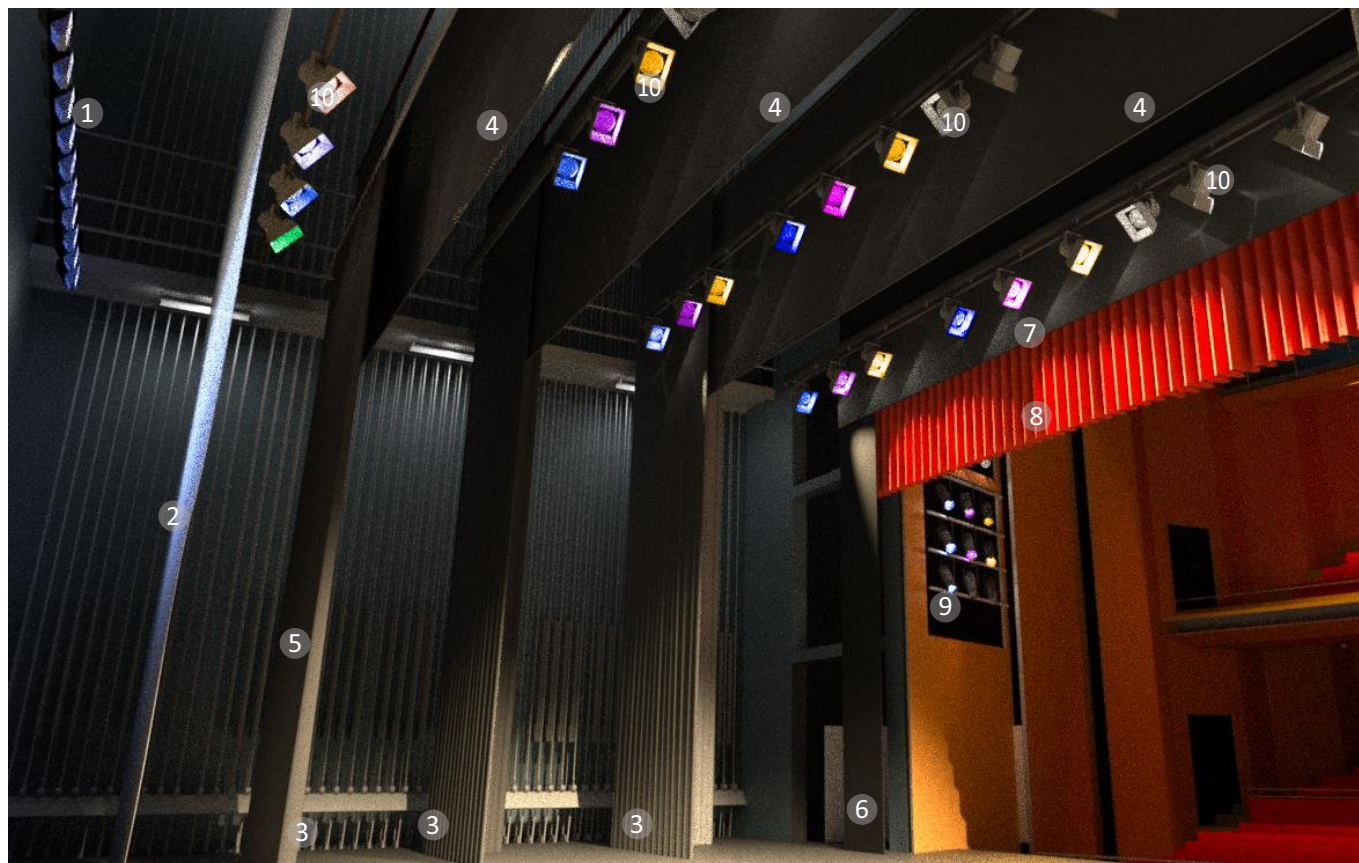


INFORMATION SHEET

The basic elements of a typical lyric theatre stage drapes and masking fit-out.

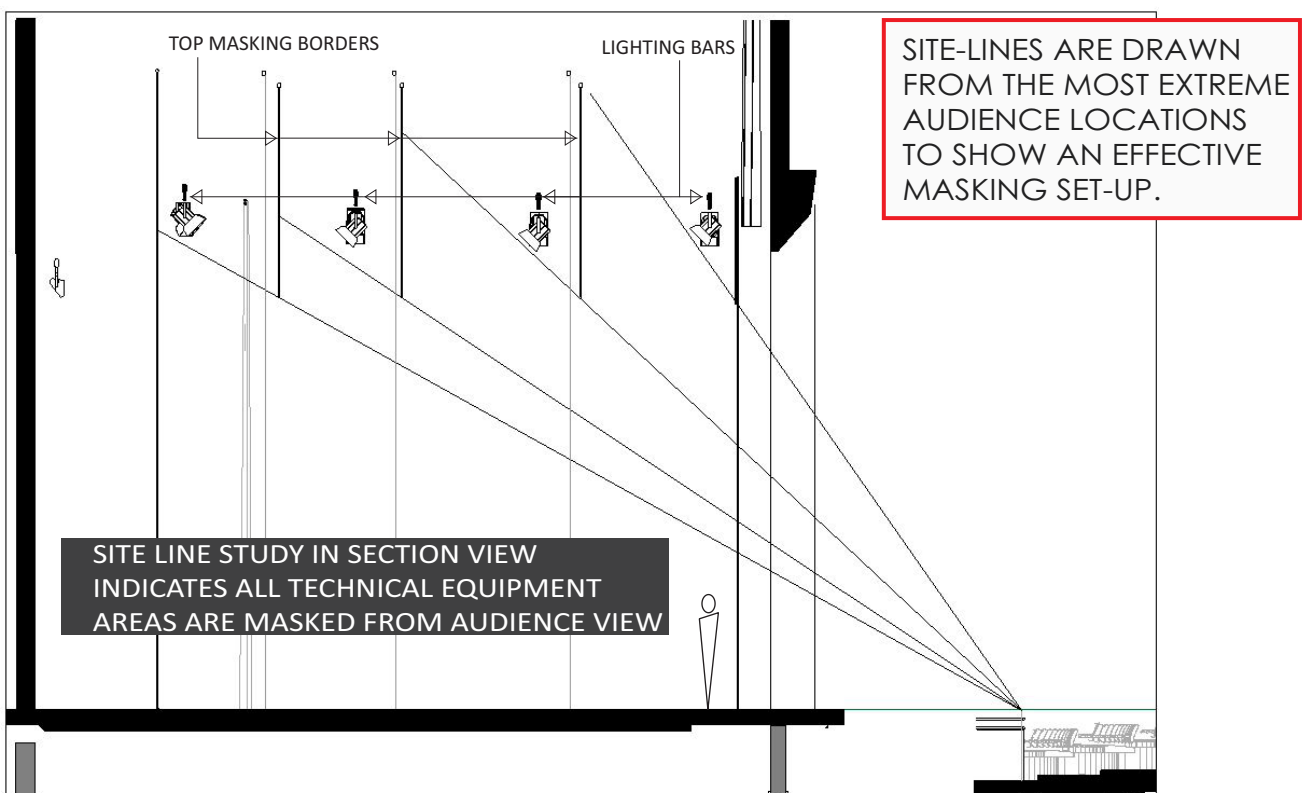
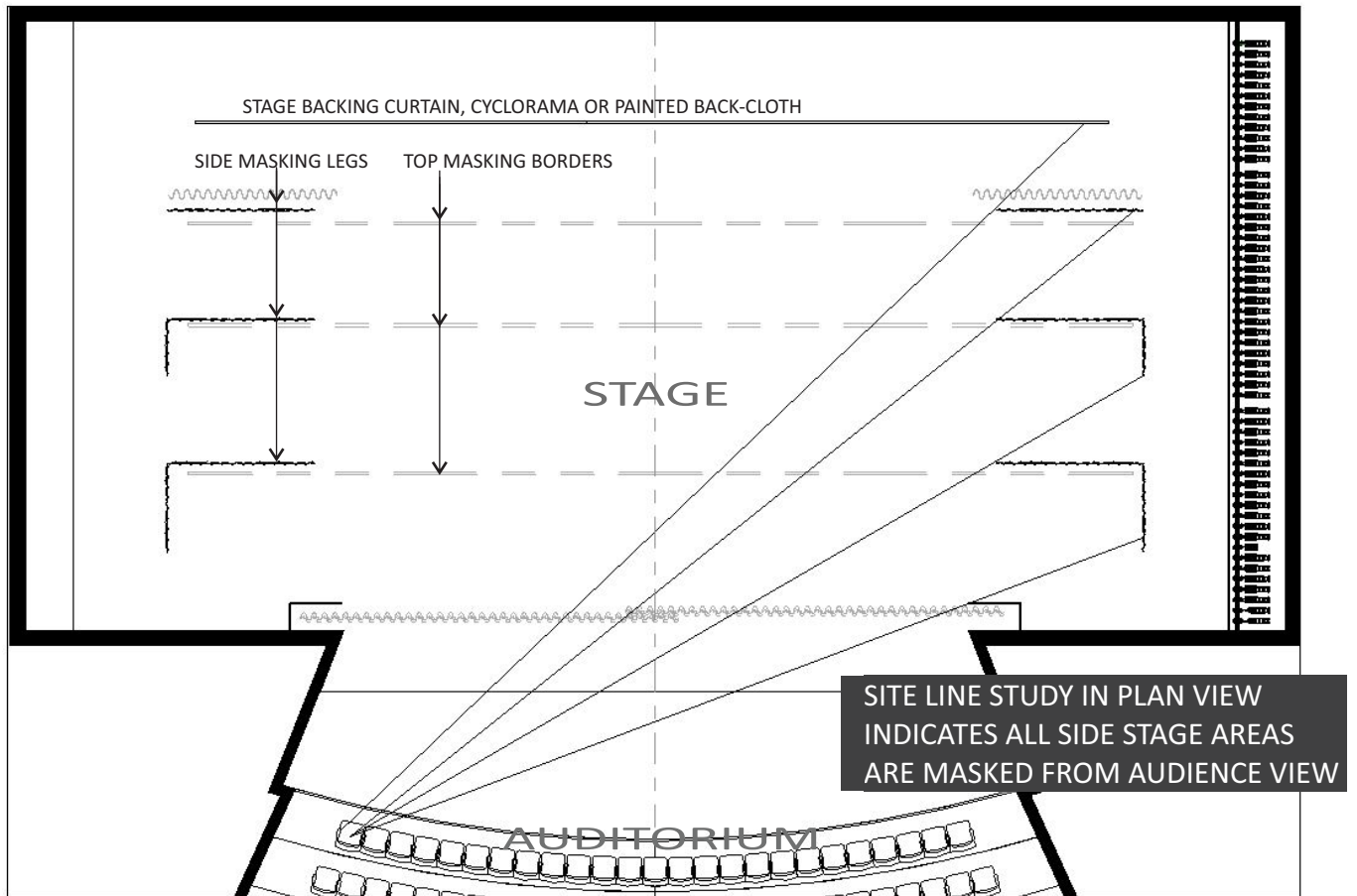
In a well designed and equipped theatre a set of standard black (usually wool) curtains will provide comprehensive masking of all offstage and above stage areas from every member of the audience.

This illustration shows a masking curtain set-up in a medium size lyric theatre viewed from upstage .



LEGEND

1. LED Cyclorama flood light batten - Lighting from the rear
2. Rosco Twin White seamless vinyl Cyclorama
3. Black wool Side Masking Legs. 50% fullness. Each pair (one on each side of the stage) are attached to flying scenery batten
4. Black wool masking border. Flat (no fullness) with pocket for 20mm conduit tail pipe
5. Black wool full width bi-parting curtain. 50% fullness; attached to flying scenery batten. Can be flown or opened.
6. Proscenium tormentor directly upstage of House curtain
7. Proscenium teaser - virtually in the same plane as the tormentor, directly upstage of House curtain. Usually framed black wool
8. House Curtain - usually 100% fullness velvet - with backing to minimize light bleed and acoustic transmission.
9. Stage lighting from Auditorium "box booms"
10. Stage lighting bars. Hung from Counterweight battens.



DRAWINGS LIKE THESE ARE PRODUCED BY STAGE DESIGNERS AS A GUIDE TO PREPARING ADEQUATE MASKING WHILST ALLOWING IDEAL STAGE ACCESS FOR PERFORMERS AND THE REQUIRED ACCESS OVERHEAD FOR LIGHTING EQUIPMENT AND OTHER PRODUCTION ELEMENTS.



PRODUCT SHEET

DESCRIPTION

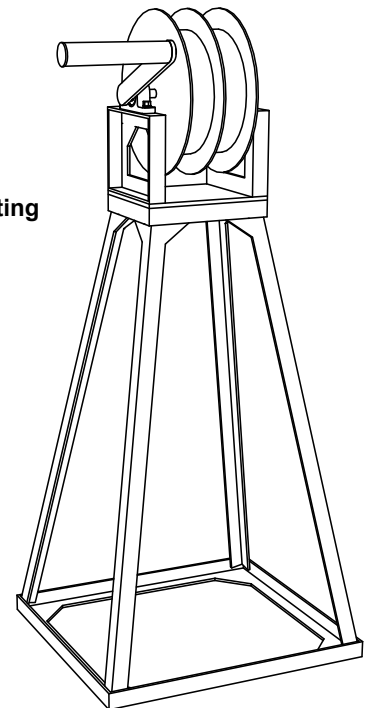
STAGECRAFT Manual Tab Winches are ideal for small theatres and halls where the main curtain runs on overlapping curtain tracks and is used frequently.

The hand winch provides greater control of curtain speed in comparison with hand pulled operation

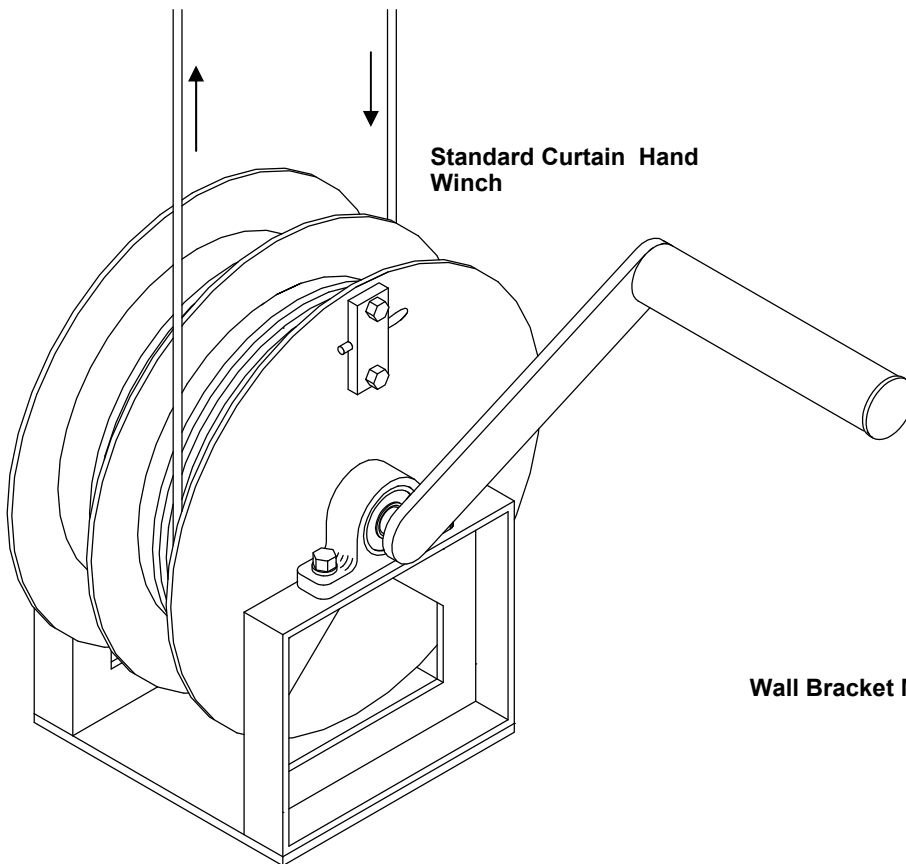
FEATURES

- Two part winch drum separates incoming and outgoing cables
- Quite ball-bearing operation.
- Recommended to be used in conjunction with spring tensioned head and return pulleys
- Convenient tension adjustment
- Optional installation methods
- Custom mounting brackets available
- Finish: painted black

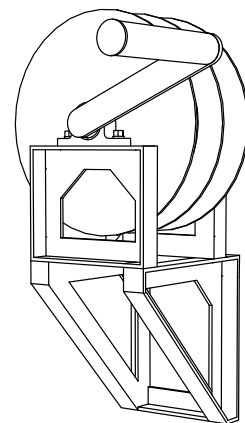
Floor Stand Mounting



Standard Curtain Hand Winch



Wall Bracket Mounting





PRODUCT SHEET

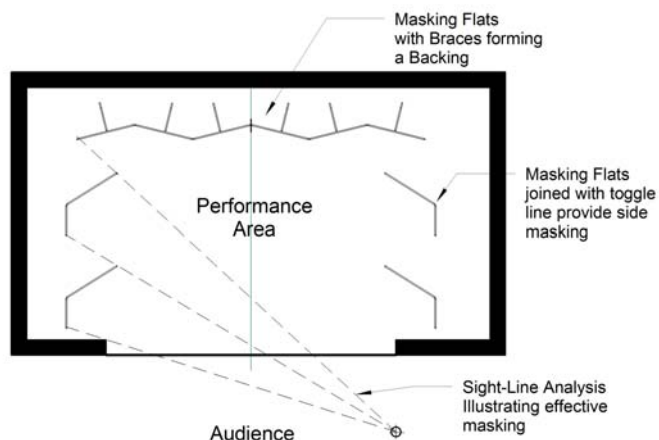
DESCRIPTION

The STAGECRAFT Scenery & Masking Flats can transform your open stage or space into one in which side stage and rear wall masking can be set up quickly.

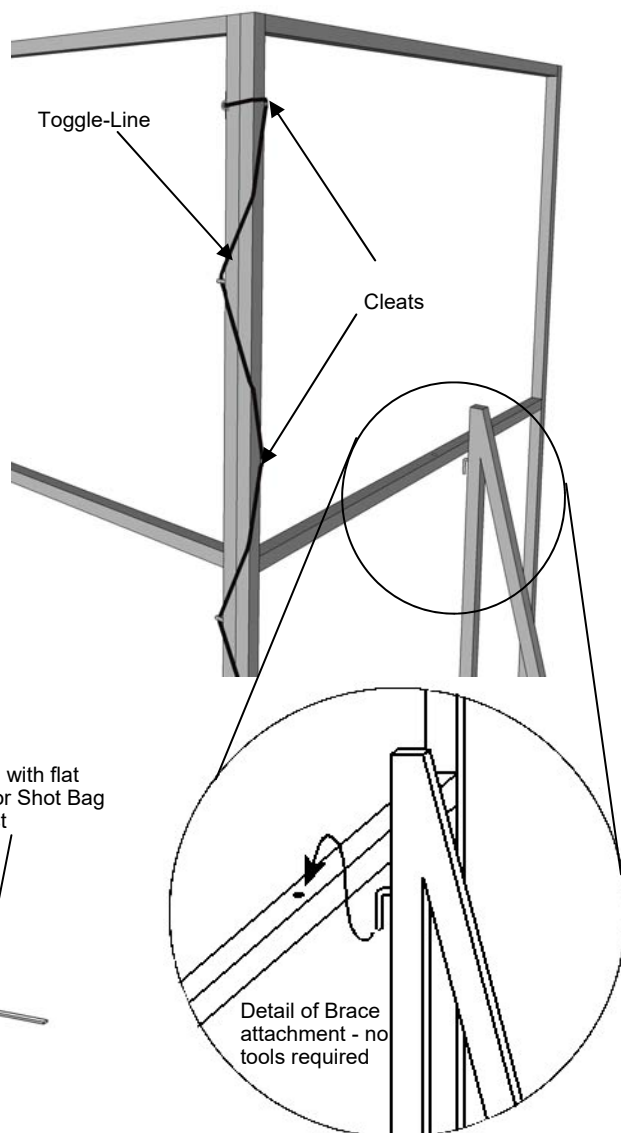
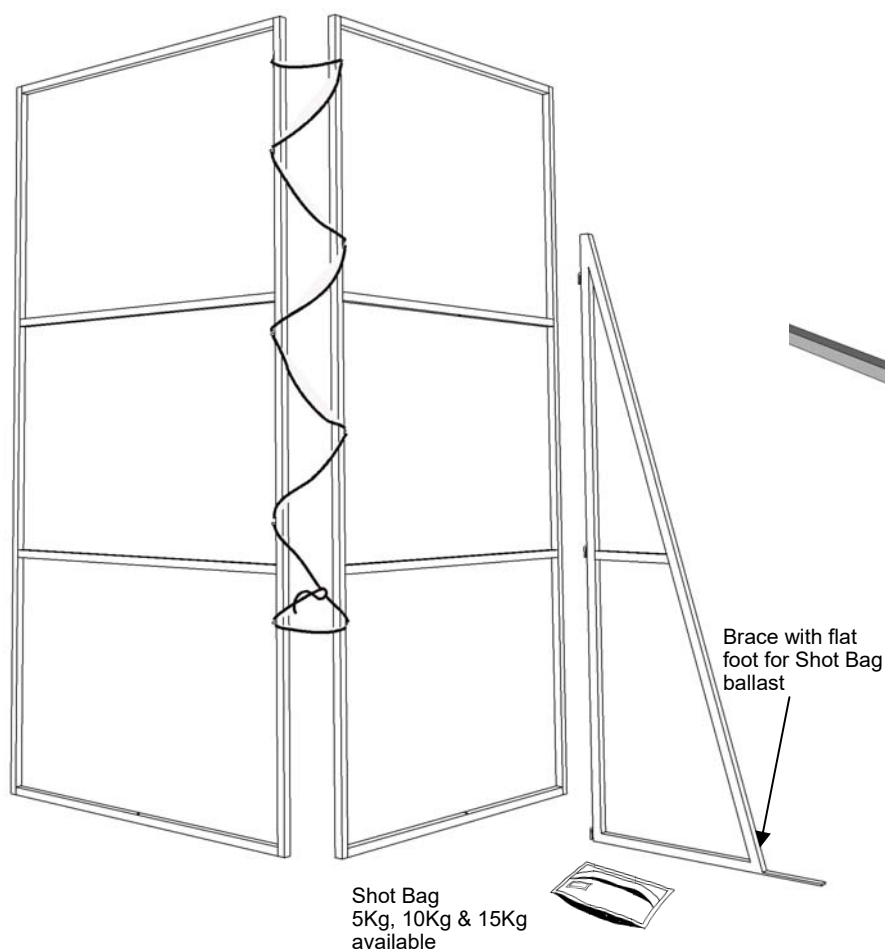
Standards sizes: 2400 x 1200
3000 x 1200

FEATURES

- Narrow profile (25mm) enables compact storage
- Stretched canvas on 25mm square hollow section steel.
- Size and paint finish options
- Simple hook-in triangular brace
- Sash-line cleats for joining flats together
- Shot Bag weights—optional
- Hardwood runners top and bottom.



Above: Plan of Scenery/Masking Flats in typical arrangement fully masking a Performance Area





PRODUCT SHEET

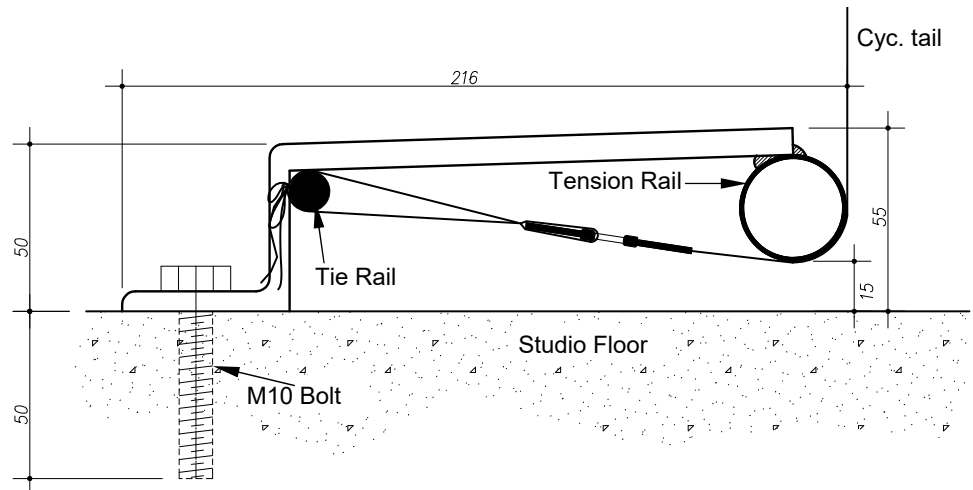
DESCRIPTION

The STAGECRAFT Studio Cyclorama Floor Tensioning System is ideal for situations where a cyclorama is used regularly. The Floor Tensioning system is designed to work in conjunction with all STAGECRAFT Track Systems and with the STAGECRAFT Cyclorama Side Tensioner.

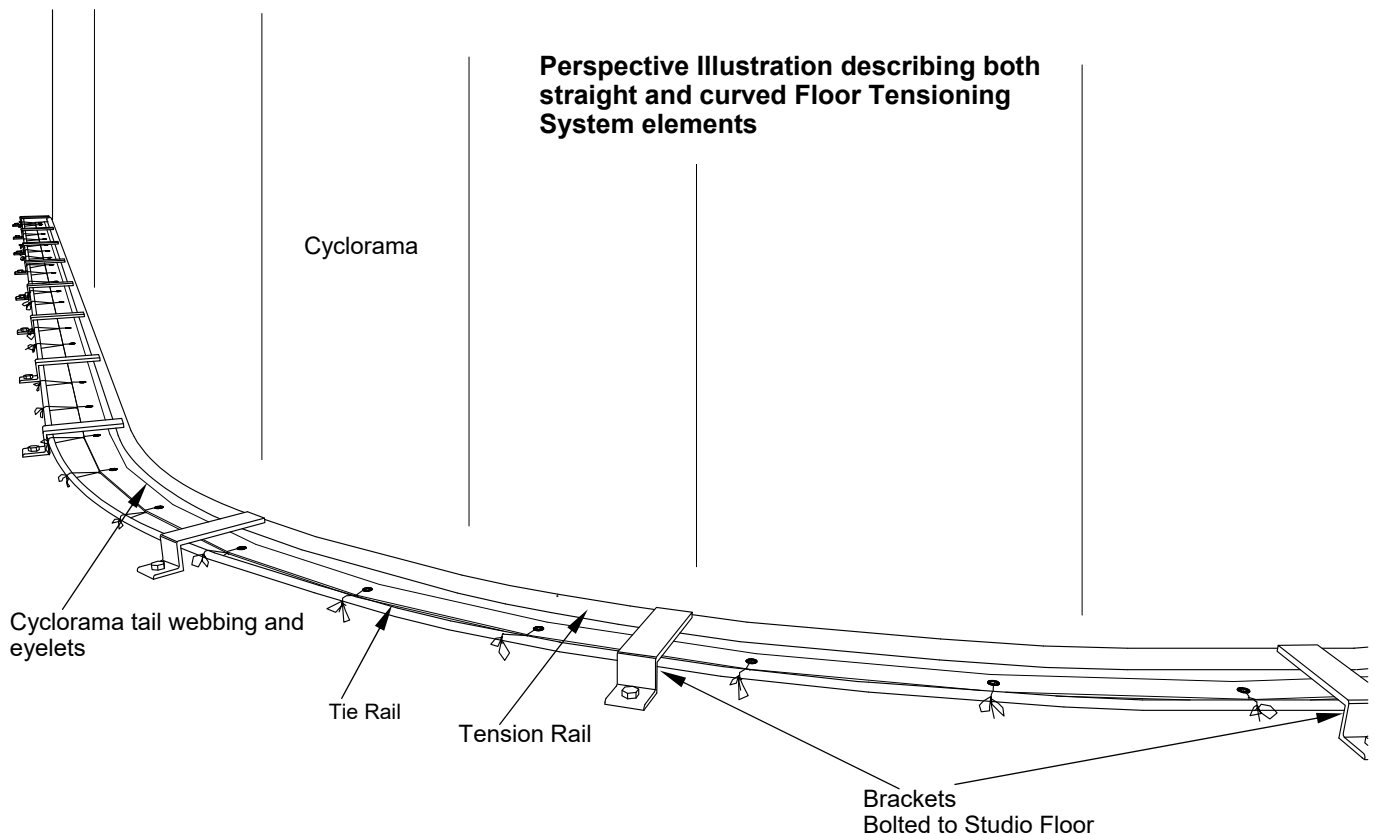
FEATURES

- Simple Installation
- Easy tension adjustment
- Curve radius options available from 1.5 m.
- White powder coat finish
- The hidden tie system ensures a smooth wrinkle-free cyclorama

Side Elevation of Floor Tensioning System support bracket



Perspective Illustration describing both straight and curved Floor Tensioning System elements





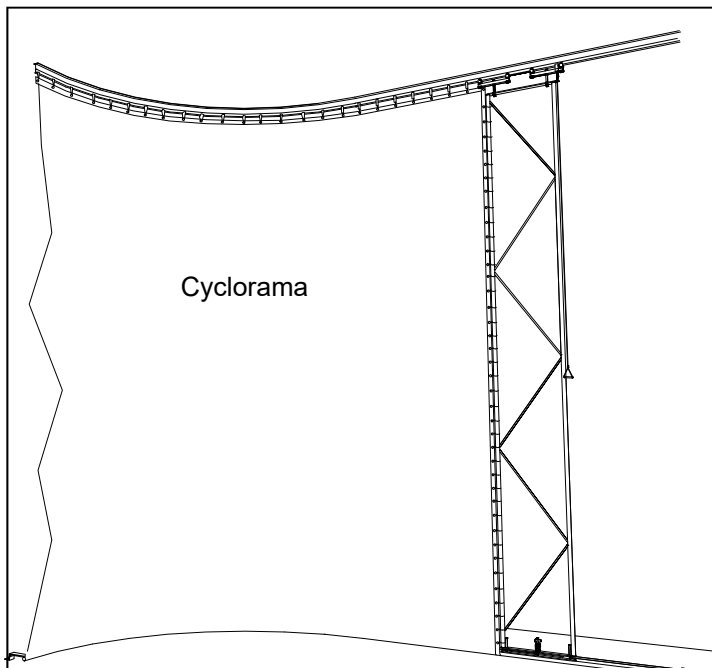
PRODUCT SHEET

DESCRIPTION

The STAGECRAFT Studio Cyclorama Side Tensioning System is ideal for situations where a cyclorama is used regularly. The Studio Cyclorama Side Tensioning system is designed to work in conjunction with all STAGECRAFT Track Systems and with the STAGECRAFT Studio Cyclorama Floor Tensioner.

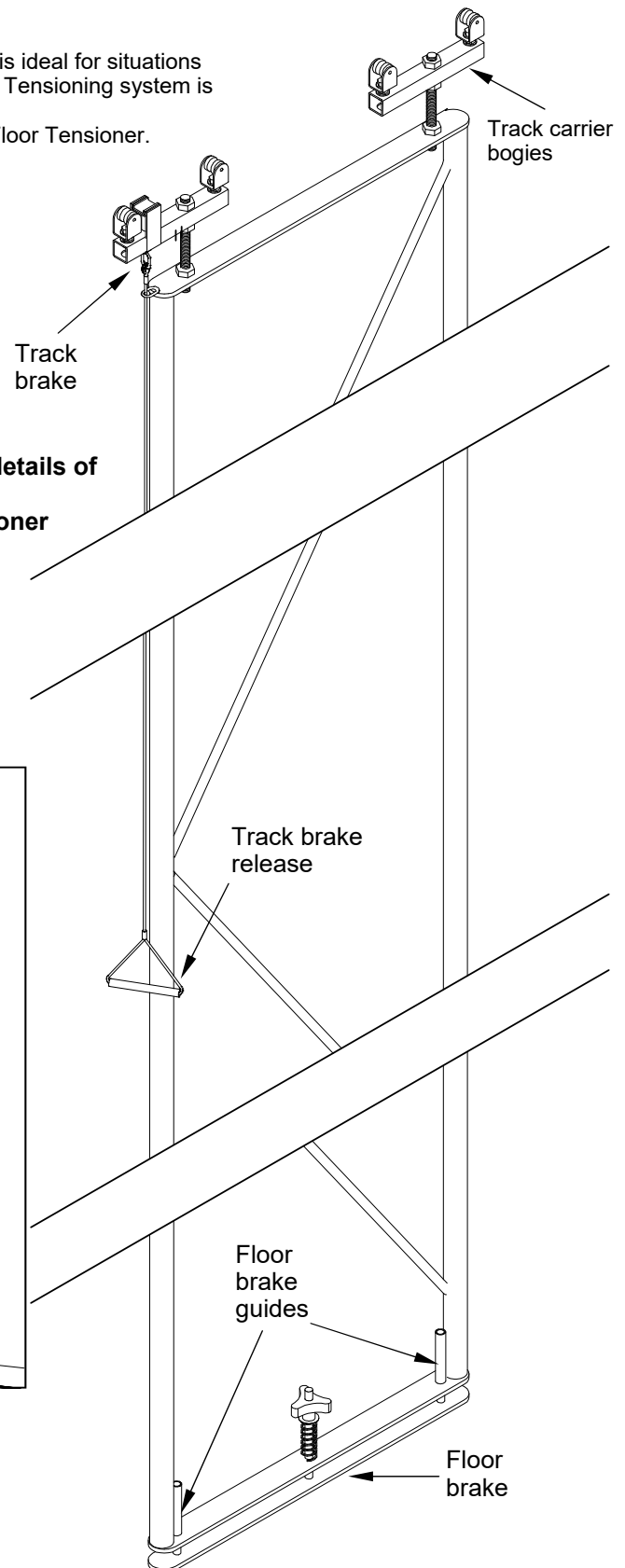
FEATURES

- Simple Installation
- Easy tension adjustment
- Brakes top and bottom.
- White powder coat finish
- The hidden tie system ensures a smooth wrinkle-free cyclorama
- Smooth running dual track carrier bogies
- Sizes to suit every installation



Perspective Illustration showing Cyclorama Side Tensioner in conjunction with STAGECRAFT Track and Floor Tensioner System

Isometric details of Cyclorama Side Tensioner





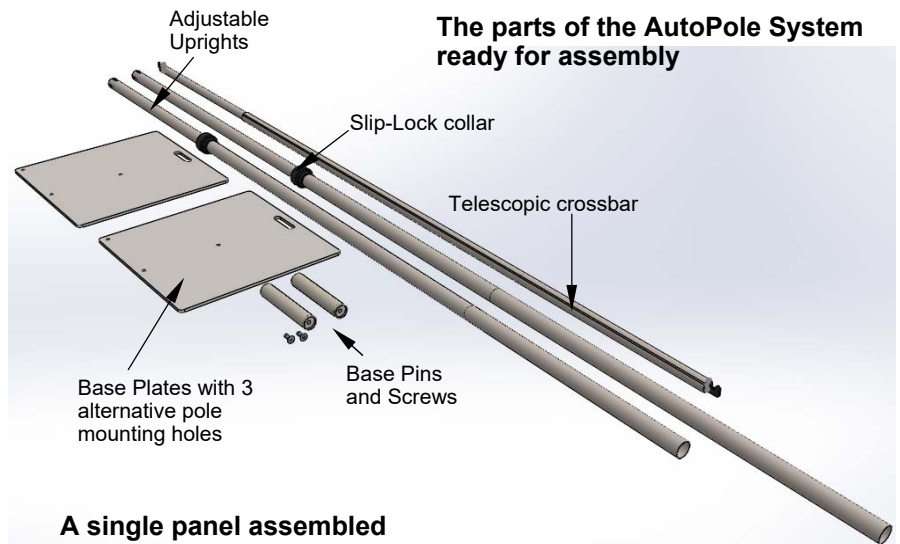
PRODUCT SHEET

DESCRIPTION

The STAGECRAFT AutoPole portable curtain support system is ideal for exhibitions and similar applications, where professional-looking, floor-supported curtaining and banners are required.

FEATURES

- The most significant feature of the AutoPole system is the Slip-Lock collar assembly which locks automatically when the inner pole of the upright support is raised to the desired height. When a load is applied downwards the ball-taper lock tightens; the more pressure applied, the more secure the grip. To release, simply raise the inner pole slightly and lift the release ring.
- The telescopic cross-bars hook neatly to the uprights without the need for bolts or clamps. No tools required for set-up or disassembly.
- The Base plate design caters for a variety of set-up needs. The base pin for the upright may be placed optionally on the edge, in the corner, or at the centre of the base plate.
- A handle slot in the base plate allows easier carrying.
- Accurate and rapid height adjustment. Curtains can be attached at a lower working level and then pushed up to the desired height.
- All tube surfaces have a protective anodized coating.

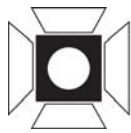


A single panel assembled



Detail:
Curtain top
corner





PRODUCT SHEET

DESCRIPTION

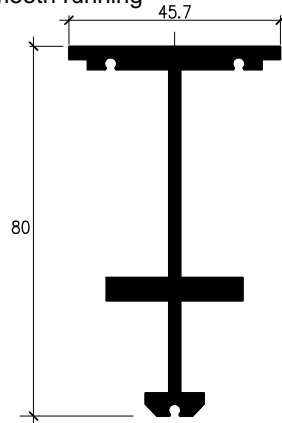
The STAGECRAFT 200 Series Studio Track System is ideal for studio and theatre applications where robust, smooth running tracking is required.

The system may be operated via:

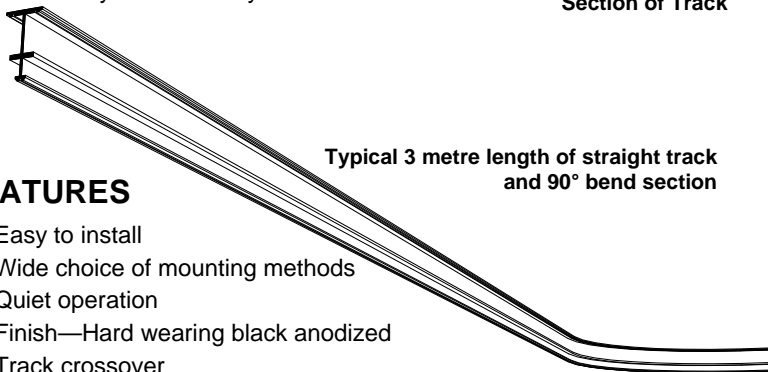
- Walk-along,
- Manual hauling line
- Motor driven

The Studio Track System may be configured as:

- Single track,
- Continuous Loop
- Dual track
- Overlapping, or
- In a variety of custom layouts



Section of Track

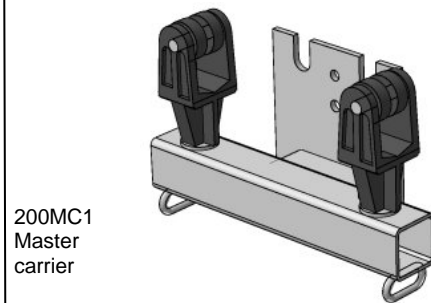


Typical 3 metre length of straight track
and 90° bend section

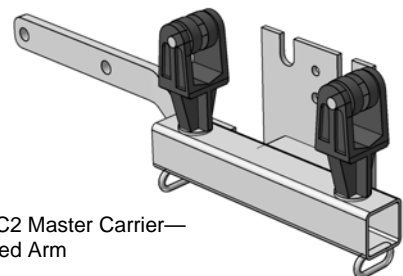
FEATURES

- Easy to install
- Wide choice of mounting methods
- Quiet operation
- Finish—Hard wearing black anodized
- Track crossover
- 90° corners standard, other angles available to order
- Corners from 400 mm radius
- Standard track lengths 6 metres, other lengths to order
- Special mounting and custom layouts available.

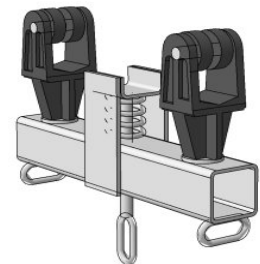
Selected Components & Accessories



200MC1
Master
carrier



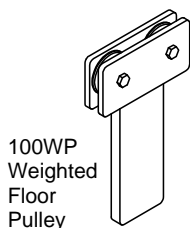
200MC2 Master Carrier—
Cranked Arm



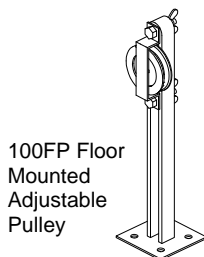
200MC3
Master Carrier with
Brake



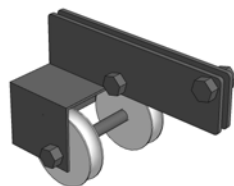
200LG
Outside Line
Guide



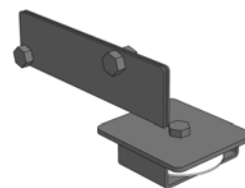
100WP
Weighted
Floor
Pulley



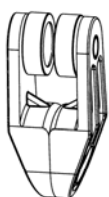
100FP Floor
Mounted
Adjustable
Pulley



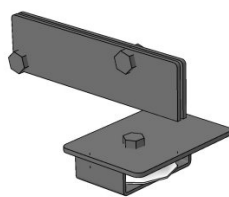
200HP Head Pulley



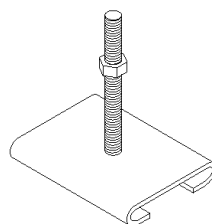
200RP Return Pulley



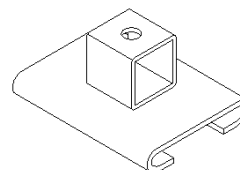
200SC Single Carrier



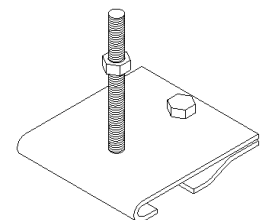
200RP2 Return
Pulley—
Overlapped Track



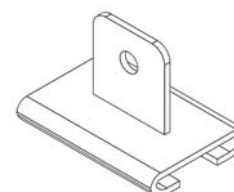
200TF1 Top Fix Clamp
8 mm Stud



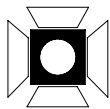
200TF2 Top Fix
Clamp -
Mounting Block



200TF3 Top Fix Clamp -
2 Piece with Stud



200TF4
Top Fix Clamp -
Vertical parallel plate
with hole



stagecraft
Pty Ltd

ENTERTAINMENT
ENGINEERING

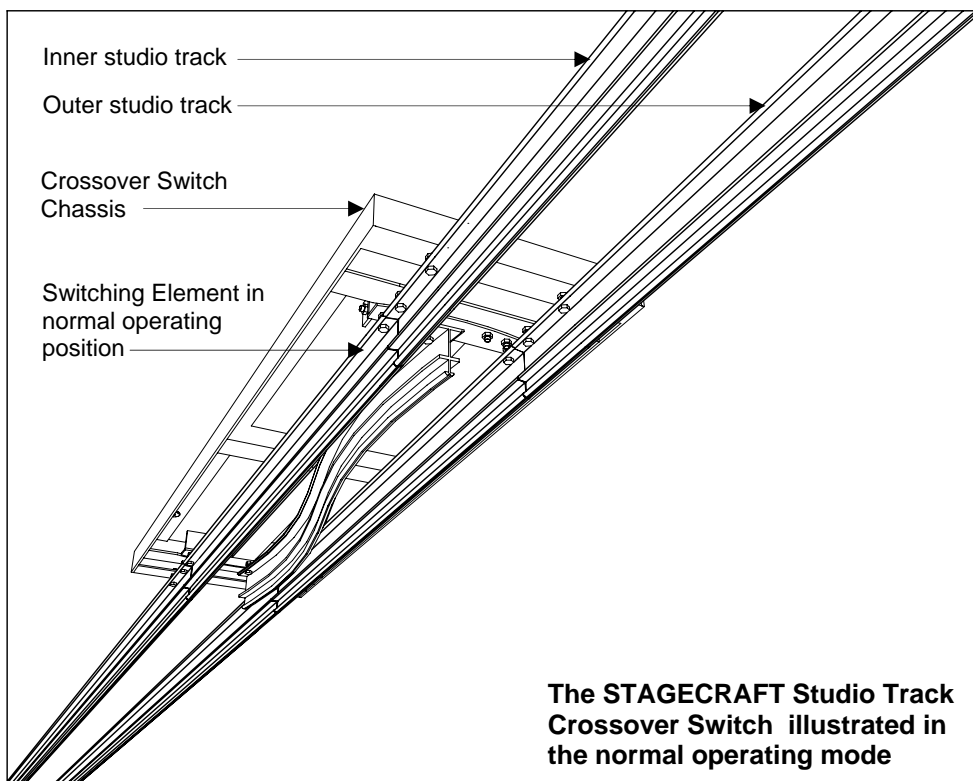
STUDIO TRACK CROSSOVER SWITCH

PRODUCT INFORMATION SHEET

DESCRIPTION

The STAGECRAFT Studio Track Crossover Switch provides a simple to operate device to transfer studio drapes between a parallel pair of tracks set at 200 mm apart.

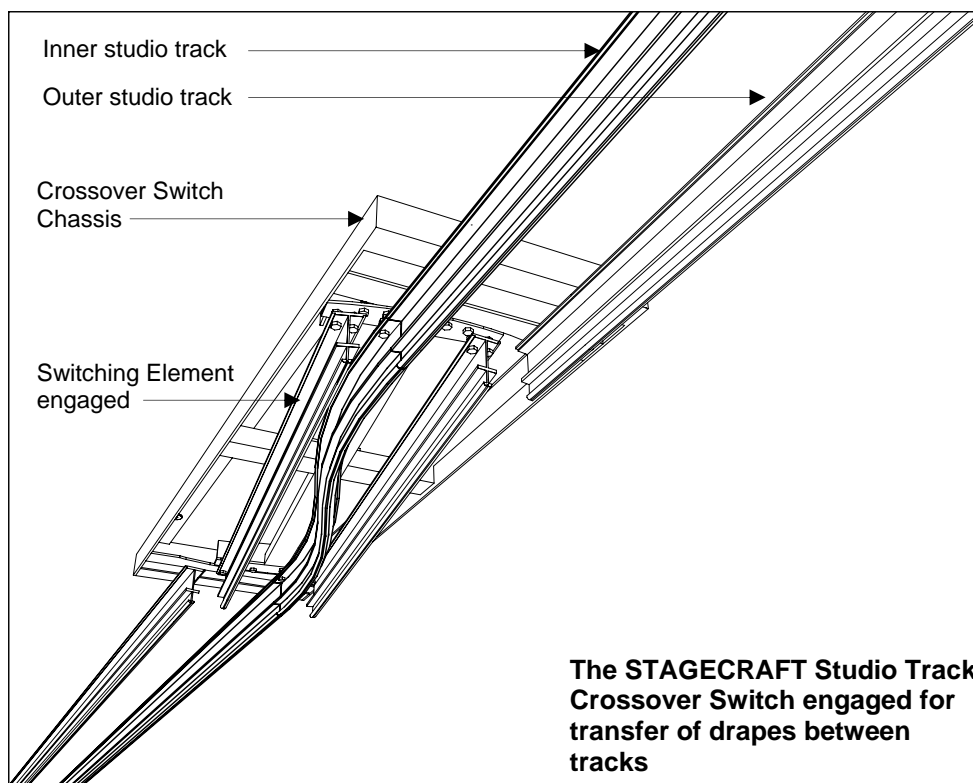
The Crossover Switch is fully compatible with the STAGECRAFT Studio Track System and is designed to be used in conjunction with the STAGECRAFT Studio Track Junction Switch where an additional storage track is installed.



The STAGECRAFT Studio Track Crossover Switch illustrated in the normal operating mode

FEATURES

- Low profile silhouette requiring minimal space
- Highly accurate and lockable track alignment adjustment
- Positive and precise operation
- Direct manual operation standard — optional remote electric servo operation available.
- Optional automatic blanking of open ended tracks available to avoid inadvertent de-tracking of drapes
- May be retrofitted to existing STAGECRAFT Studio Track installation

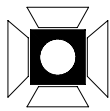


The STAGECRAFT Studio Track Crossover Switch engaged for transfer of drapes between tracks

SC/KR 019 -04/06

STAGECRAFT PTY LTD, ABN 11 009 040 144
11 INVERNESS STREET, MALAGA, WESTERN AUSTRALIA 6090
PHONE +61 8 9249 2700 FAX +61 8 9249 2709
www.stagecraft.com.au

All specifications may be changed without prior notice. While due diligence is used in compiling the data herein, Stagecraft Pty Ltd does not accept liability for losses ensuing from any errors or omissions.



stagecraft
Pty Ltd

ENTERTAINMENT
ENGINEERING

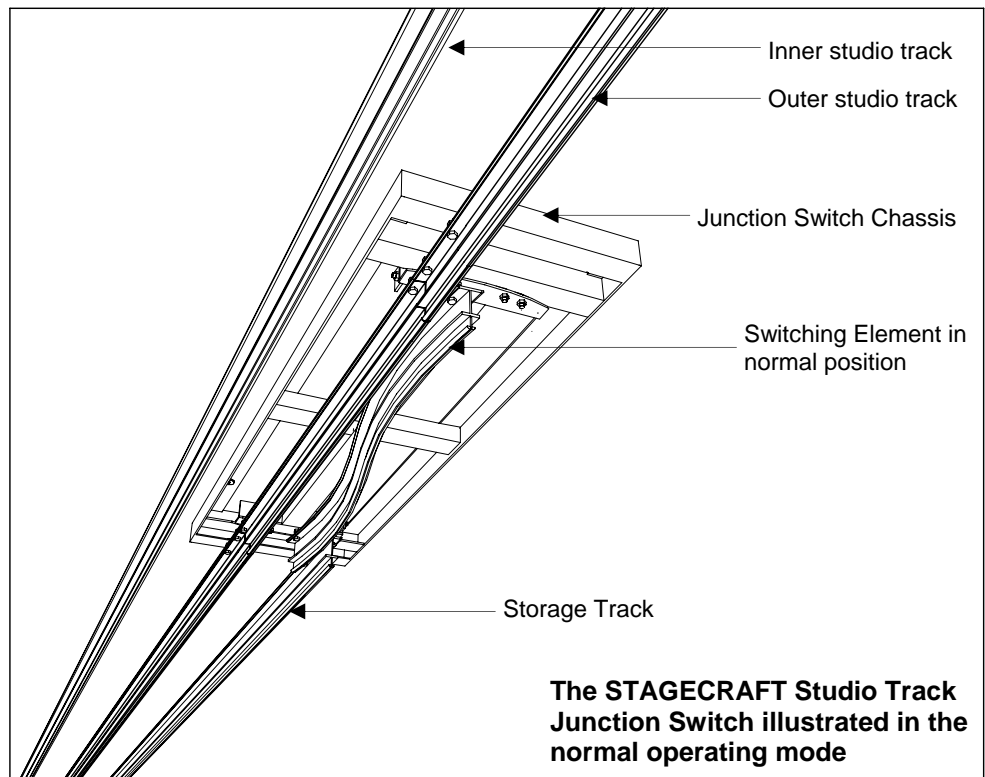
STUDIO TRACK JUNCTION SWITCH

PRODUCT INFORMATION SHEET

DESCRIPTION

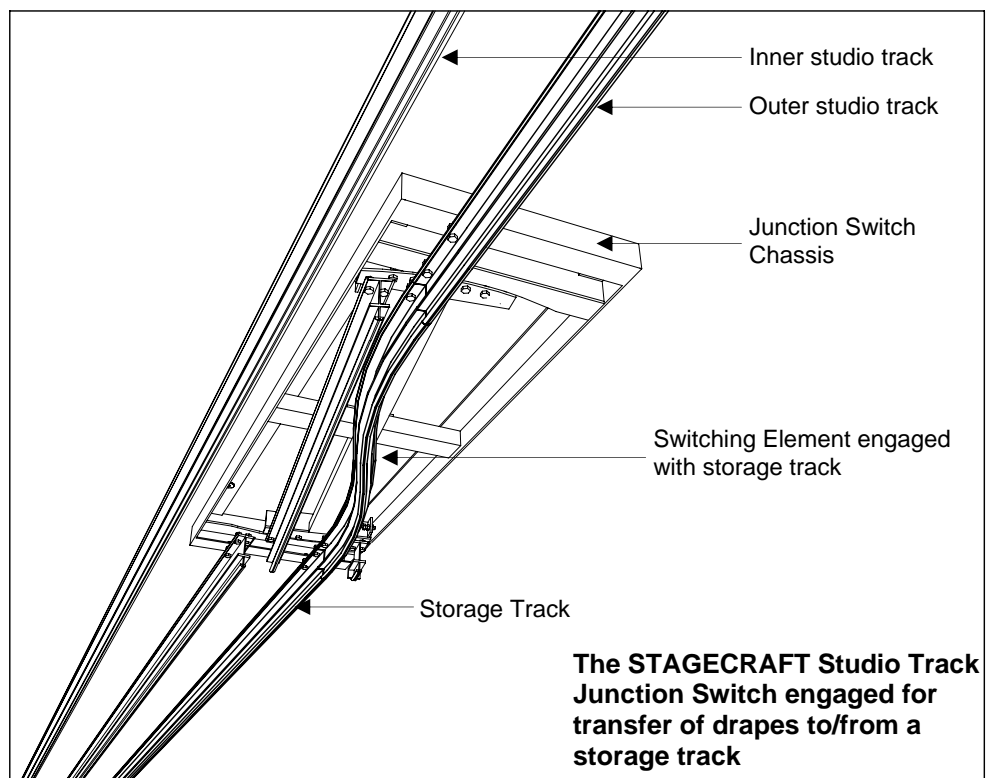
The STAGECRAFT Studio Track Junction Switch provides an efficient and simple to operate device to transfer studio drapes to and from a storage track that is parallel to and set at 200 mm spacing from the outer track of a studio.

The Junction Switch is fully compatible with the STAGECRAFT Studio Track System and may be used with either a single track system or a dual track system (as illustrated).



FEATURES

- Low profile silhouette requiring minimal space
- Highly accurate and lockable track alignment adjustment
- Positive and precise operation
- Direct manual operation standard — optional remote electric servo operation available.
- Optional automatic blanking of open ended tracks available to avoid inadvertent de-tracking of drapes
- May be retrofitted to existing STAGECRAFT Studio Track installation



SC/KR 020 -04/06

STAGECRAFT PTY LTD, ABN 11 009 040 144
11 INVERNESS STREET, MALAGA, WESTERN AUSTRALIA 6090
PHONE +61 8 9249 2700 FAX +61 8 9249 2709
www.stagecraft.com.au

All specifications may be changed without prior notice. While due diligence is used in compiling the data herein, Stagecraft Pty Ltd does not accept liability for losses ensuing from any errors or omissions.



PRODUCT SHEET

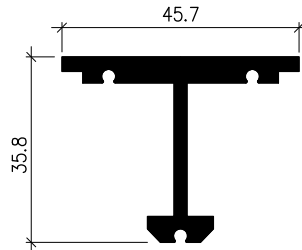
DESCRIPTION

The STAGECRAFT 300 Series Compact Track System is ideal for studio and other commercial applications where a low profile, smooth running tracking is required.

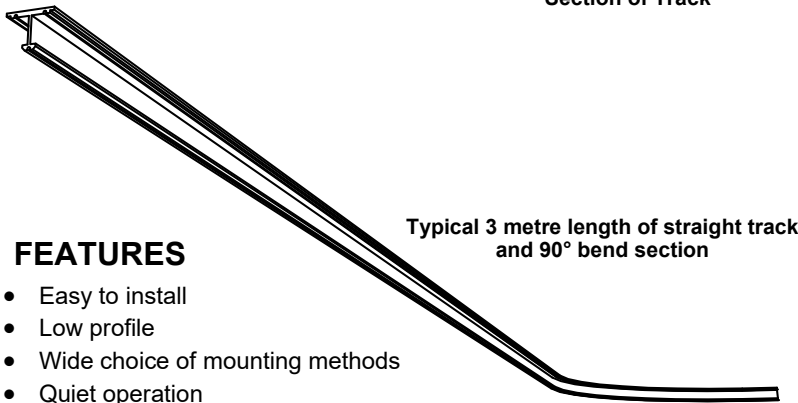
The system may be operated via:

- Walk-along,
- Manual hauling line
- Motor driven

The 300 Series Compact Track System is designed to install directly to, and be continuously supported by an existing structure.



Section of Track

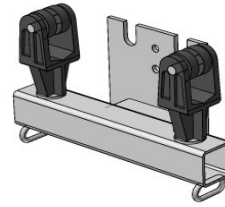


Typical 3 metre length of straight track and 90° bend section

FEATURES

- Easy to install
- Low profile
- Wide choice of mounting methods
- Quiet operation
- Finish—Hard wearing Black powder-coat
- 90° corners standard, other angles available to order
- Corners from 300 mm radius
- Standard track lengths 6 metres, other lengths to order
- Special mounting and custom layouts available.

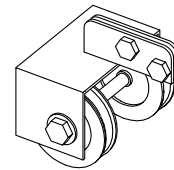
Selected Components & Accessories



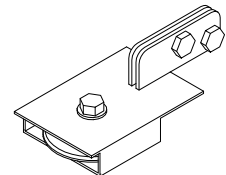
200MC1 Master carrier



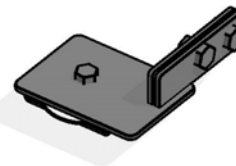
200SC2 Single Carrier



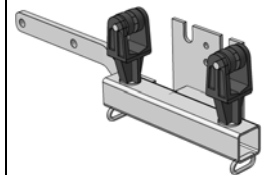
300HP1 Head Pulley



300RP Return Pulley



300RP2 Return Pulley—
Overlapped track

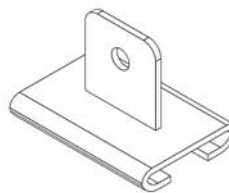


200MC2 Master Carrier—
Cranked Arm

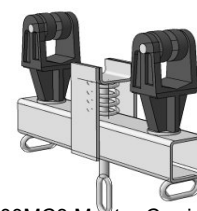
Architectural Specification

The track shall be a black anodized extruded aluminium STAGECRAFT Compact Track System providing silent and smooth operation.

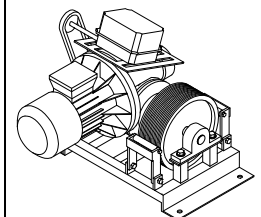
It shall be capable of top mounting anywhere along its length. Individual runners shall be bearing loaded nylon wheeled type and spaced at nominal 250 mm centres. Runners shall be rated at 30 kg each maximum. It shall be possible to remove or replace any runner anywhere along the track.



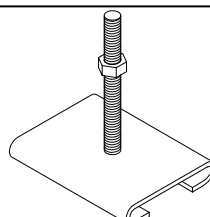
200 TF4 Top Fix Clamp
Plate with hole



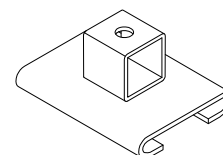
200MC3 Master Carrier
with Brake



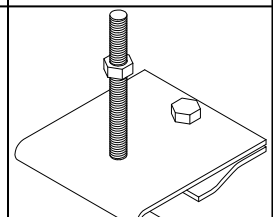
100MD55 Three Phase
.33kw Motor Drive



200 TF1 Top Fix Clamp
8 mm Stud



200TF2 Top Fix Clamp -
Mounting Block



200TF3 Top Fix Clamp -
2 Piece with Stud

PRODUCT SHEET

DESCRIPTION

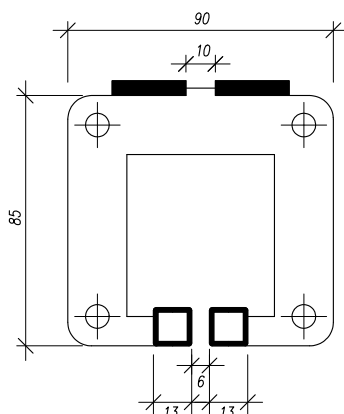
The STAGECRAFT 100 Series Theatre Track System is ideal for tracking theatre curtains and drapes.

The system may be operated via:

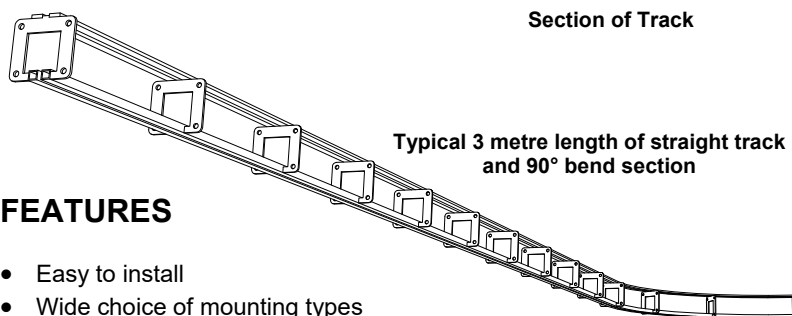
- Walk-along,
- Manual hauling line
- Motor driven

The Theatre Track System may be configured as:

- Single track,
- Dual track, or
- Overlapping



Section of Track



Typical 3 metre length of straight track and 90° bend section

FEATURES

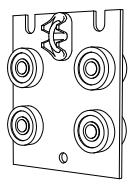
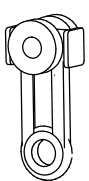
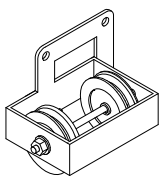
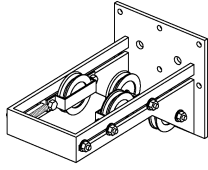
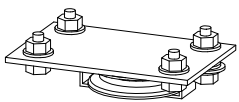
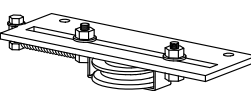
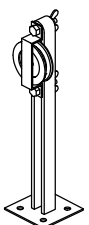
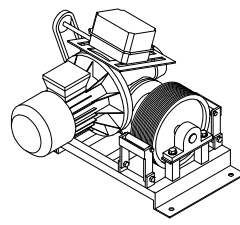
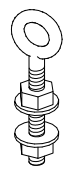
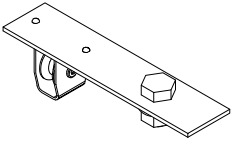
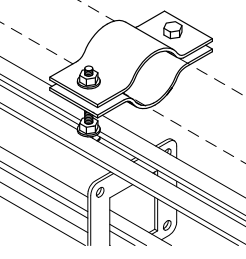
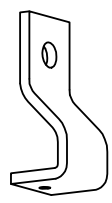
- Easy to install
- Wide choice of mounting types
- Quiet operation
- Finish—Hard wearing Black powder-coat
- Dual track crossover
- 90° corners standard, other angles available to order
- Corners from 300 mm radius
- Standard track lengths 3 metres, other lengths to order
- Special mounting and custom layouts available.

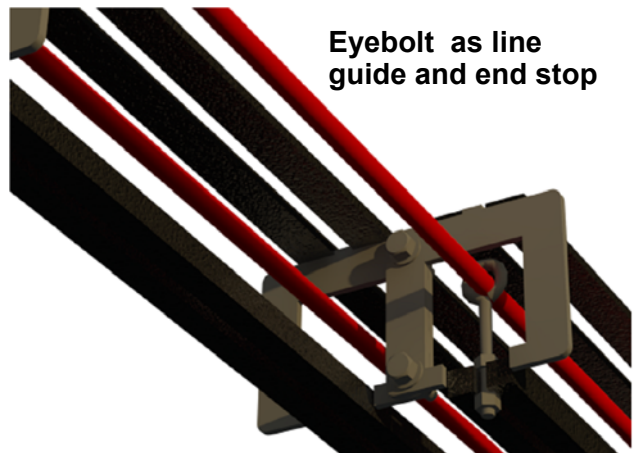
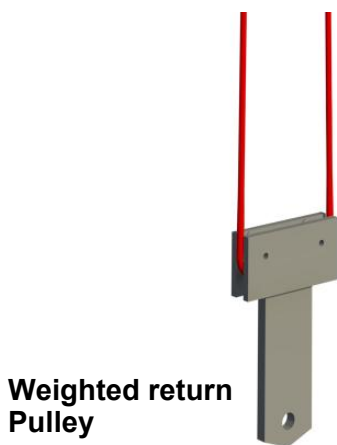
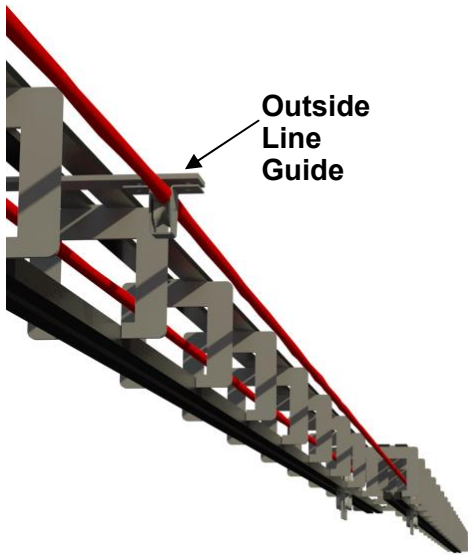
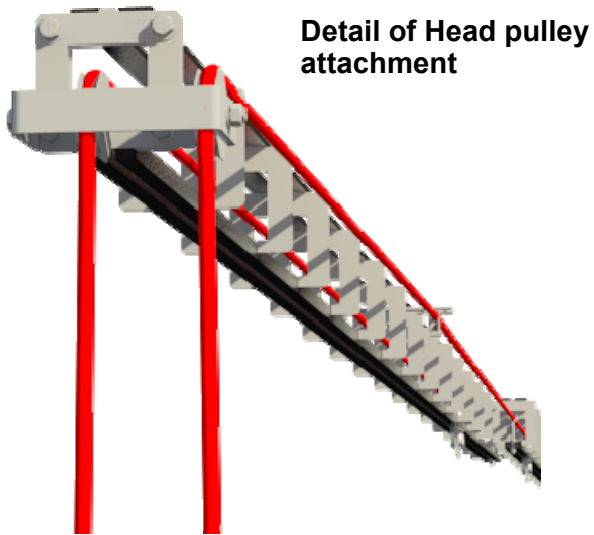
Architectural Specification

The tracking system shall be a theatre type, welded steel construction and black plastic powder coated to offer a silent and smooth operation.

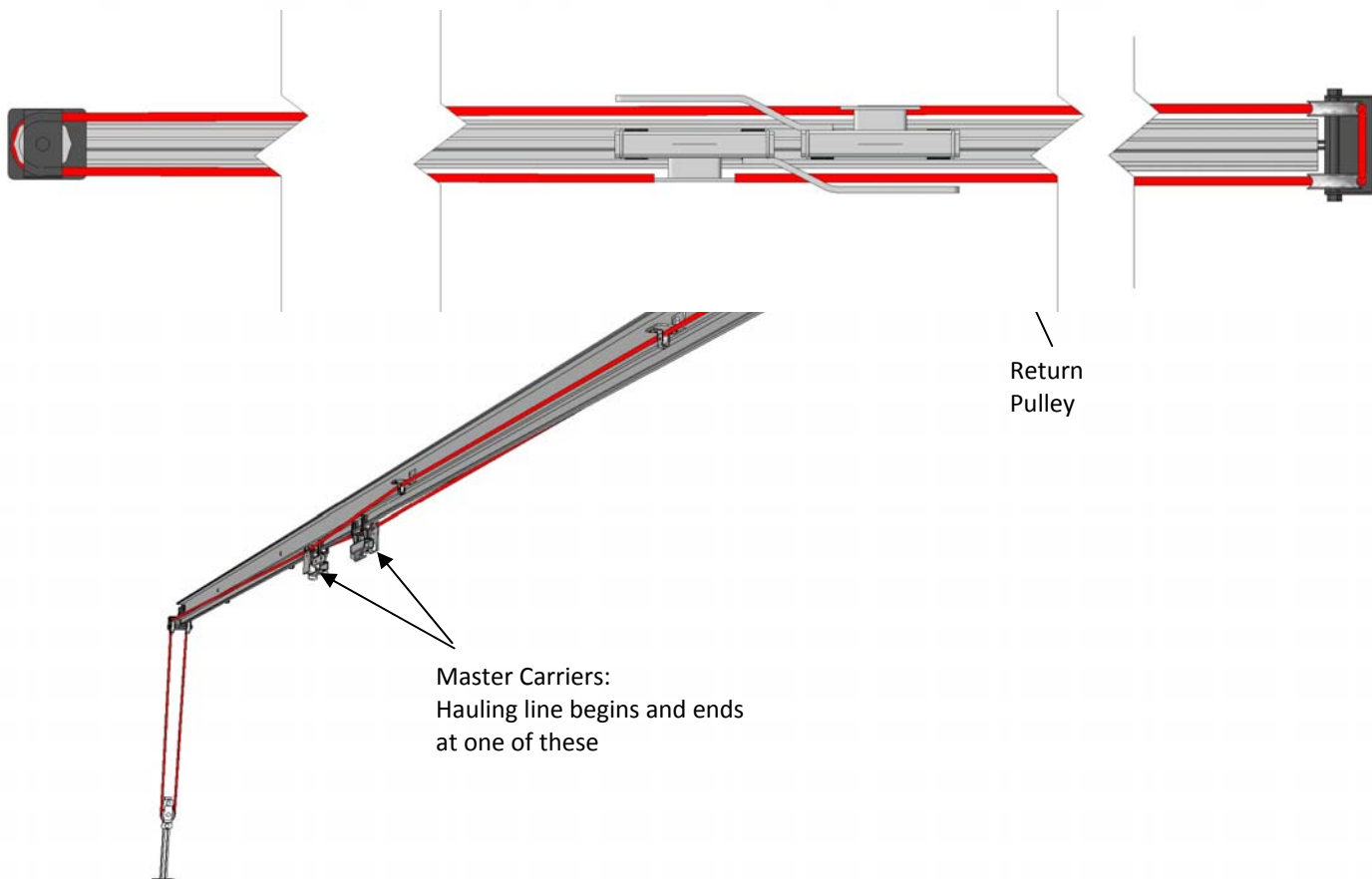
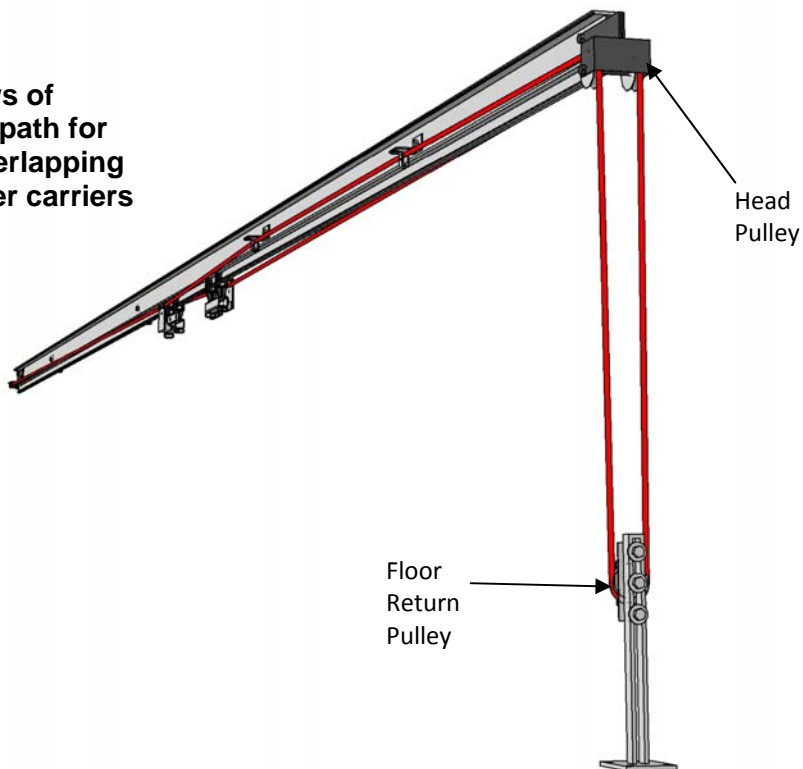
It shall be capable of top mounting anywhere along its length. Individual runners shall be heavy duty wheeled type with stainless steel axle bushes and spaced at 250 mm centres. It shall be possible to remove or replace any runner into the track from the top anywhere along the track.

It shall be capable of supporting a load of not less than 20kg per lineal metre, with top supports at 1000mm centres without deflection of more than 3 mm.

	
100MC1 Master carrier	100SC1 Single Carrier
	
100HP Head Pulley	100 SHP Spring Head Pulley
	
100RP Return Pulley	100SRP Spring Return Pulley
	
101FP Floor Mounted Adjustable Pulley	100MD55 Three Phase .55kw Motor Drive
	
100IG Inside Crossover Guide	100OG Outside Line Guide
	
Barrel Clamp	100CB Clevis Bracket



**Front and back views of
correct hauling line path for
single track with overlapping
(cranked arm) master carriers**





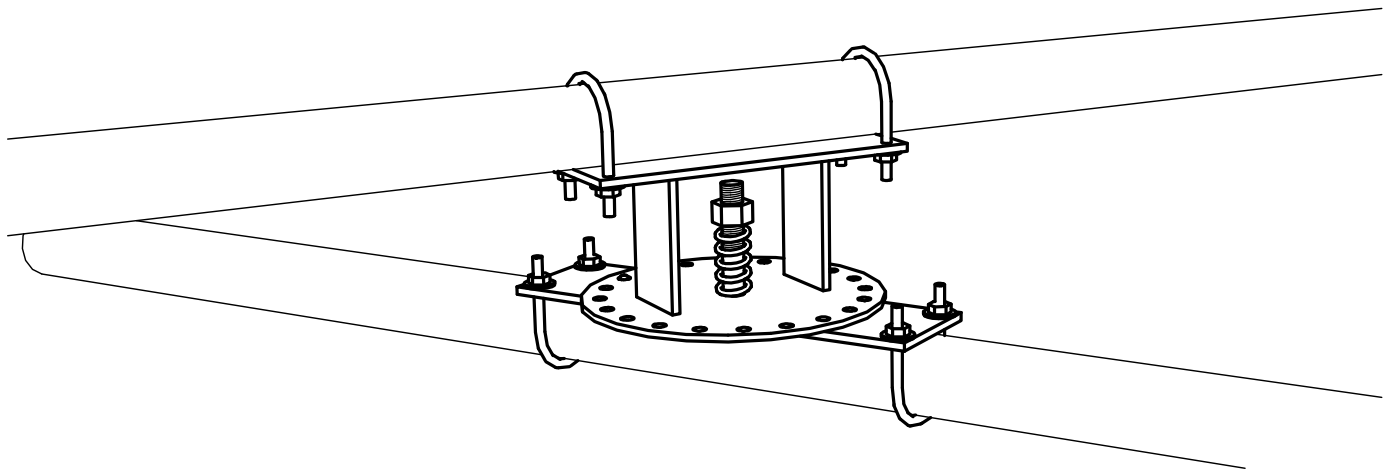
PRODUCT SHEET

DESCRIPTION

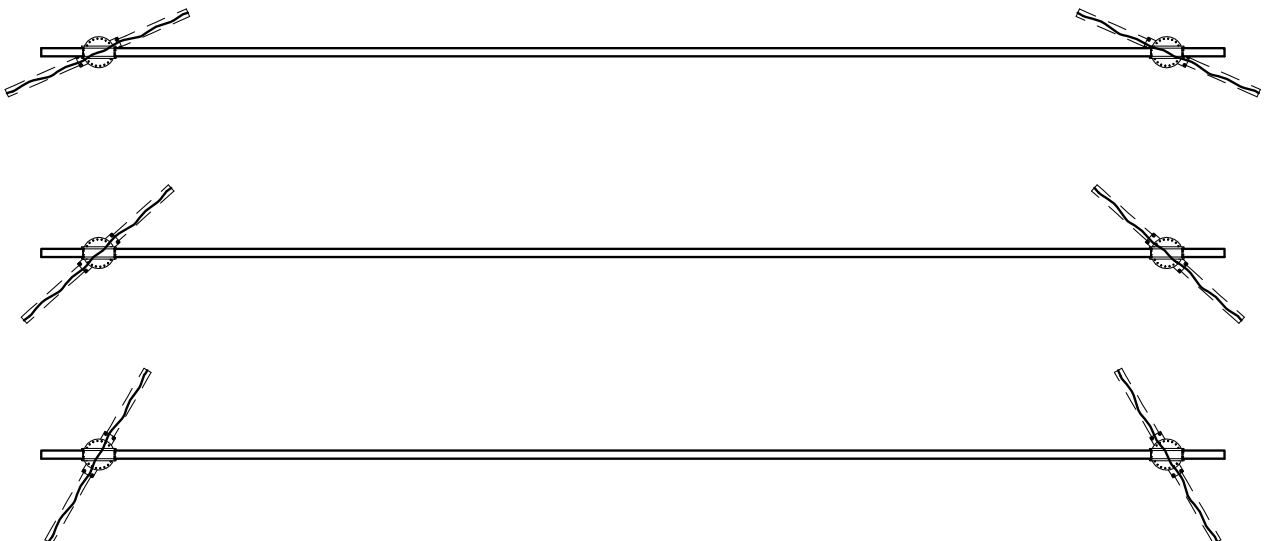
The STAGECRAFT Self-Locking Swivel Arm is ideal for small theatres, schools and halls where quick and easy adjustment of masking drapes is desirable.

A gentle pull down releases the swivel action allowing adjustment to the required angle to be achieved without tools or a ladder.

With a range of optional attachments the STAGECRAFT Self-Locking Swivel Arm can be installed onto round or square battens and steel or timber beams.



A Plan view of a typical set up of side masking drapes using Self-Locking Swivel Arms to set the angles desirable for a particular event.





Stagecraft's 200 and 300 Series extruded aluminium track and accessories have been installed in hundreds of projects.

Now we have added a unique Capstan Drive Motor which mounts directly onto our tracks

The Capstan Drive Curtain Motor is a compact and easily installed solution to meet on-batten motorised operation for large drapes. It is also ideal for any large format, straight and level curtain installation—either single or bi-parting.

Stagecraft's Capstan Drive Motors are designed to use 3mm flexible steel wire rope.

The uniquely designed *Double Vee* Pulley combined with a constant-tension pulley provide incredibly high slip-resistant properties.

Multiple Pushbutton Control Stations may be install, with the first or Master station providing the speed selection control. The Capstan Drive Curtain Motor will be capable of control from any currently used network/remote system including:

- RADIO FREQUENCY
- INFRA RED
- DMX512 and any net work that can provide contact closure commands.



▶ Heavy Duty Curtain Track with Capstan Drive Motor

▶ TRACKS

Light, Strong Proprietary Aluminium Extrusion
Anodized Black or Powder Coated
Ideal for all Larger Commercial Curtain Project

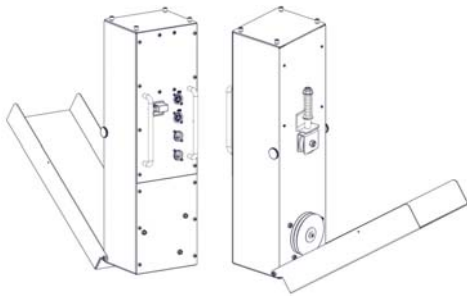
▶ MOTORS

Alternative to Hand Drawn System
Single or Multi Station Pushbutton Control
Speed Control
Mounts Directly onto Track
Compatible with Remote/Networked Control Systems

www.stagecraft.com.au
E-mail: admin@stagecraft.com.au
Phone: (08)9249 2700

11 Inverness Street
Malaga WA 6090

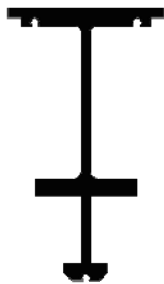
▶ Capstan Drive Curtain Motor



SPECIFICATIONS

Dimensions	W x D x H 173mm x 183mm x 571mm
Weight	15.1kg
Speed (mm/sec)	<1500
Power Supply Voltage	240 v
Control Connections	2 x RJ45 EtherCon
Limit Switch Connections	2 x RJ45 EtherCon
Power Supply Connection	3 pin IEC C13

▶ SERIES 200 Aluminium Curtain Track



SPECIFICATIONS

Section Dimensions	W x H 45.7 mm x 80 mm
Stock Length	5.8 m
Weight (Kg/metre)	1.59
Bends	Bends may be ordered down to 600mm rad.
Finish	Anodized Black
Span (Typical)	2.0 m

▶ SERIES 300 Aluminium Curtain Track



SPECIFICATIONS

Section Dimensions	W x H 45.7 mm x 36 mm
Stock Length	5.8 m
Weight (Kg/metre)	0.862
Bends	Bends may be ordered down to 600mm rad.
Finish	Anodized Black
Span (Typical)	0.5 m

▶ Architectural Specification

The **Capstan Drive Curtain Motor** shall be capable of drawing two 10metre wide by 8metre drop drapes made from 100% gathered 500GSM fabric in a bi-parting configuration.

The motor shall have multi speed operation with soft stop and start. The motor shall have two limit switches to constrain the travel of the curtain within the designed operation range.

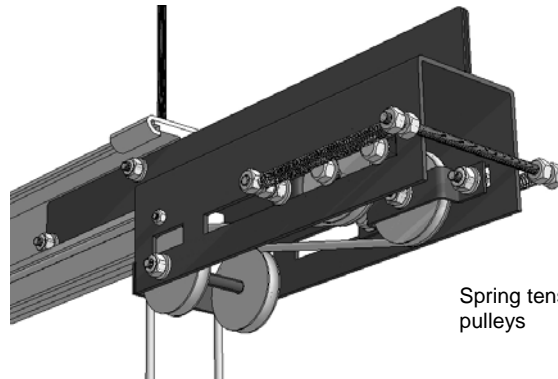
The capstan drive curtain motor shall utilize 3mm flexible steel wire rope.

The capstan drive curtain motor shall be a Stagecraft Model 1500-S.

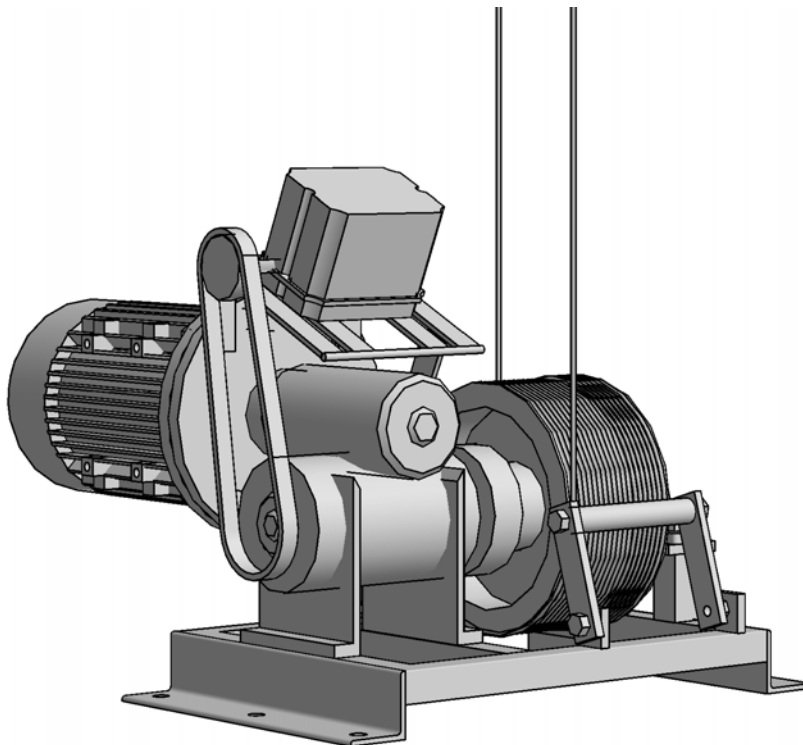
The **Light Duty Curtain Track** shall have a profile of 45.7 mm wide and 36 mm high. The track shall be anodized black and it shall be capable of bending to a minimum radius of 600 mm. The Light Duty Curtain Track shall be Stagecraft Series 300 .

The **Heavy Duty Curtain Track** shall have a profile of 45.7 mm wide and 80 mm high. The track shall be anodized black and it shall be capable of bending to a minimum radius of 600 mm. The Heavy Duty Curtain Track shall be Stagecraft Series 200 .





Spring tensioned head pulleys



100MD55 Three Phase
.55kw Motor Drive

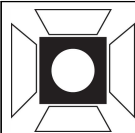
Architectural Specification

The tracking system shall be a black anodized extruded aluminum STAGECRAFT Studio Track System, providing a silent and smooth operation.

It shall be capable of top mounting anywhere along its length. Individual runners shall be bearing loaded, nylon wheeled type and spaced at nominal 250 mm centres. Runners shall be rated at 30kg each maximum. It shall be possible to remove or replace any runner anywhere along the track.

The track shall be capable of supporting a load of not less than 50kg evenly spaced across a span of 2.2 metres.

Maximum deflection from a point load of 50kg shall be 4mm.



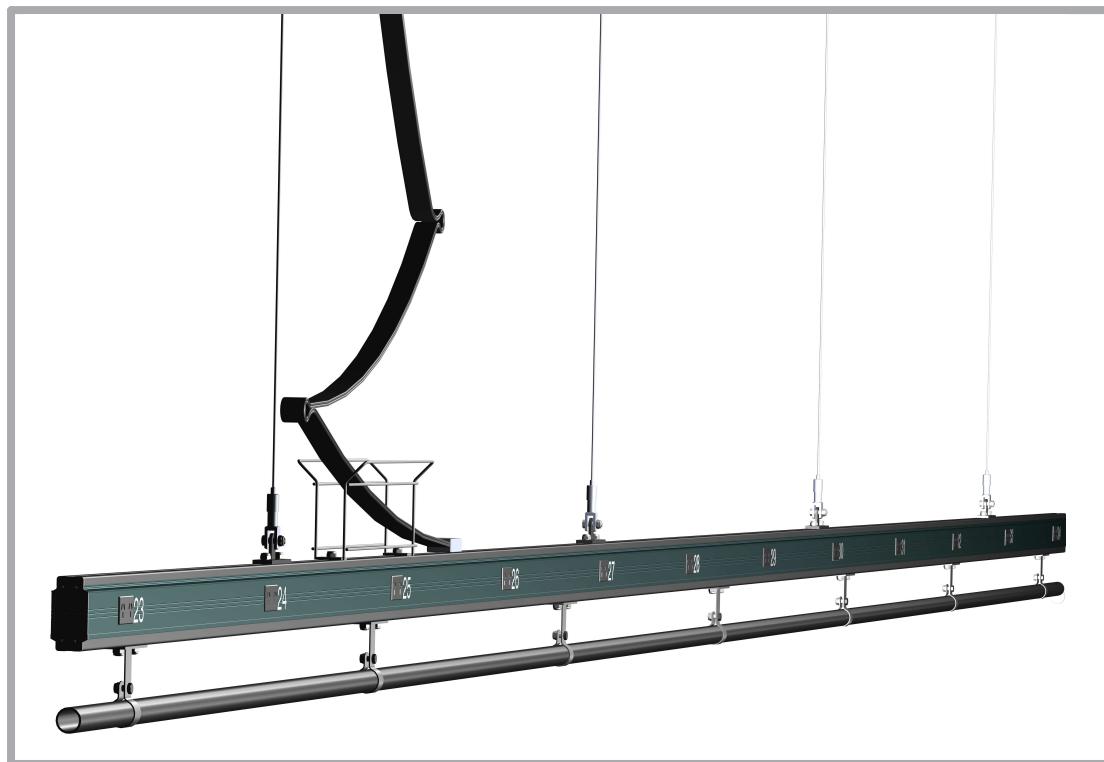
stagecraft
Pty Ltd Entertainment Engineering

PRODUCT SHEET

SLX

SLX MODULAR LIGHTING BAR

BY **stagecraft**



A PRODUCT FOR NOW

Stagecraft developed the SLX Modular Lighting Bar to meet the increasingly stringent compliance challenges for electrical and mechanical safety.

The SLX does this, as well as providing features which make installation and operation more efficient.

Our proprietary extrusions come together to provide two continuous chambers for the entire length of the bar.

The extrusion profiles also provide continuous attachment points top and bottom for rigging and accessory attachment.

Optional cable entry methods cater for all types of installation needs. Flown, fixed or chain motor rigging - in theatres, studios, museums, galleries, entertainment and function centres **SLX** has it covered.

SLX Features:

- Compliant dual auto-switched outlets
- Precise pickup point placement on-site
- Choices of installation fixings
- Your choice of cable entry configurations
- Your choice of outlet connector type and configuration
- Great accessibility for maintenance.



Flexible Configuration:

The Stagecraft SLX Modular Lighting Bar can be supplied in many configurations:

- **completely bare**, (no wiring or panel connectors)
- **performance ready** (configured and installed)
- or anything in between.

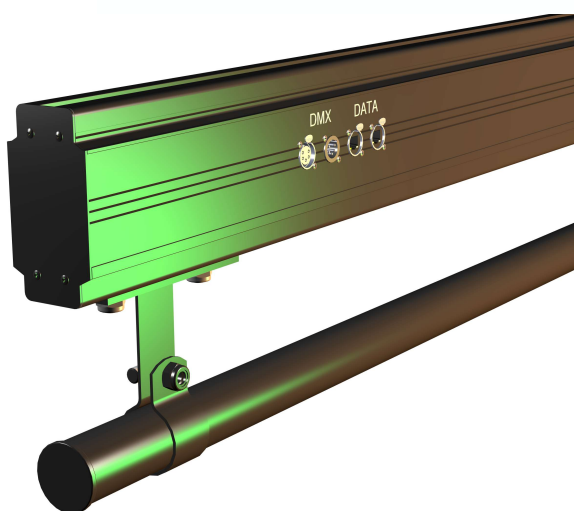


Standard 240v outlets are compliant double **auto-switched** A/NZ GPOs, **OR** CEE Style receptacles, placed on the high voltage side and spaced to the project's needs. Large circuit number numerals are supplied separately or already in place on factory finished bars.



INCOMING LIGHTING CIRCUIT MANIFOLD:

For flat multicore fed from overhead. The flat cable is captured in a clamp and individual conductors split off to their appropriate three pin outlet.

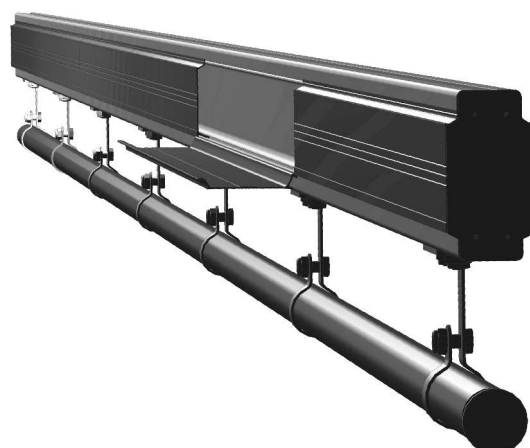


Data and AV connectors can be mounted on the Low Voltage side, using a range of mounting methods. The SLX "backbone" separates the low voltage and high voltage compartments.

The side panels swing down for wiring access/inspection.

The panels can be cut to convenient sections so that only the required section needs to be opened.

The panels can be pre-punched to your requirements or supplied with panel mounted connectors installed and pre-wired.



Rigging Options:

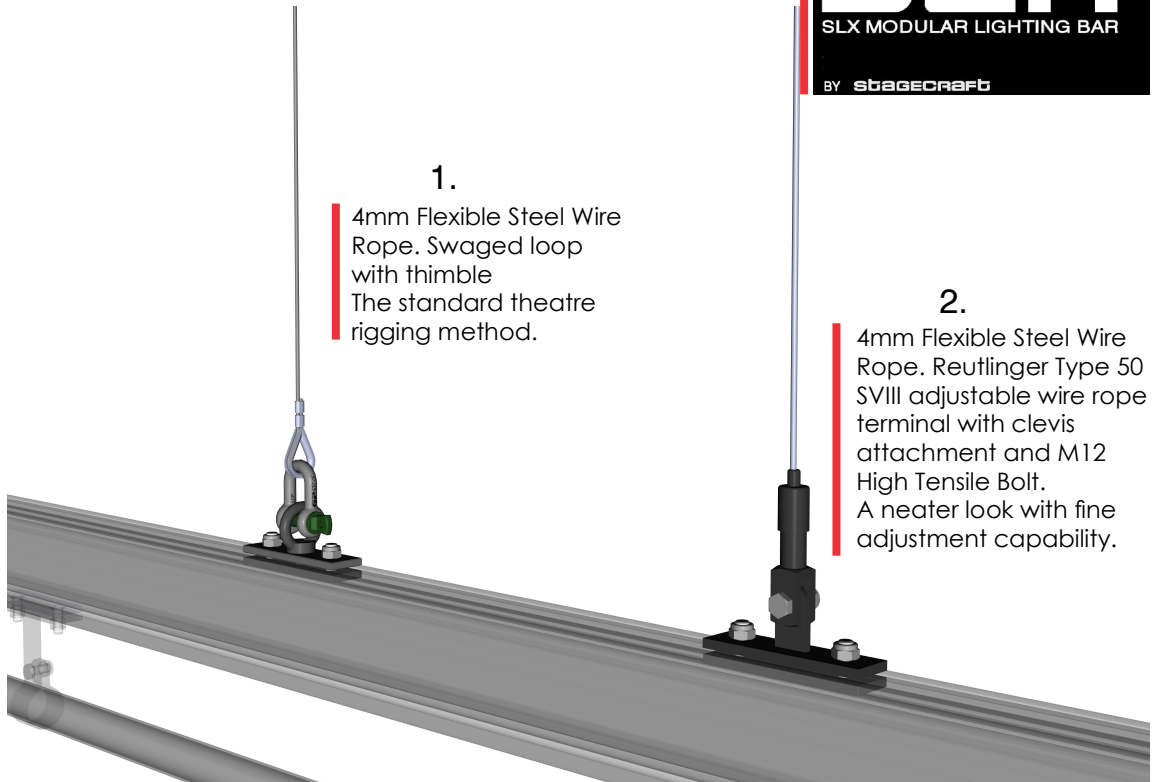


1.

4mm Flexible Steel Wire Rope. Swaged loop with thimble
The standard theatre rigging method.

2.

4mm Flexible Steel Wire Rope. Reutlinger Type 50 SVIII adjustable wire rope terminal with clevis attachment and M12 High Tensile Bolt.
A neater look with fine adjustment capability.

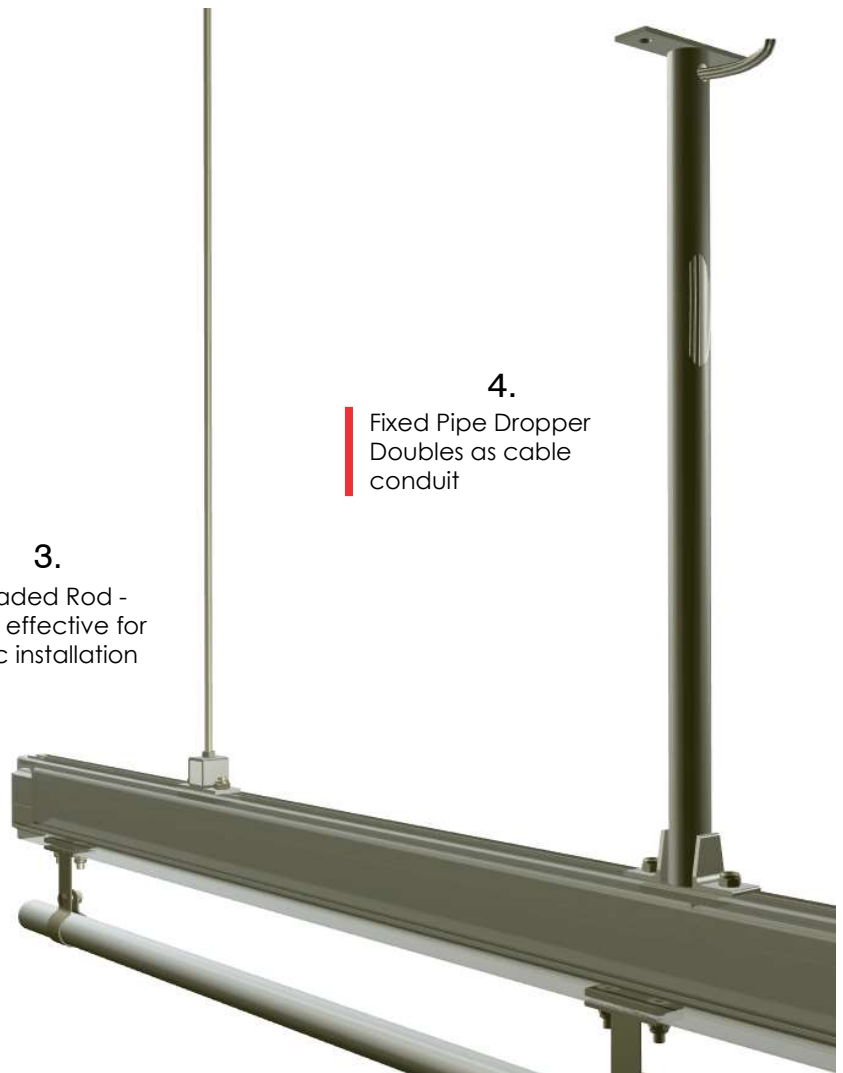


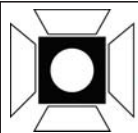
4.

Fixed Pipe Dropper
Doubles as cable conduit

3.

Threaded Rod -
Very effective for
static installation





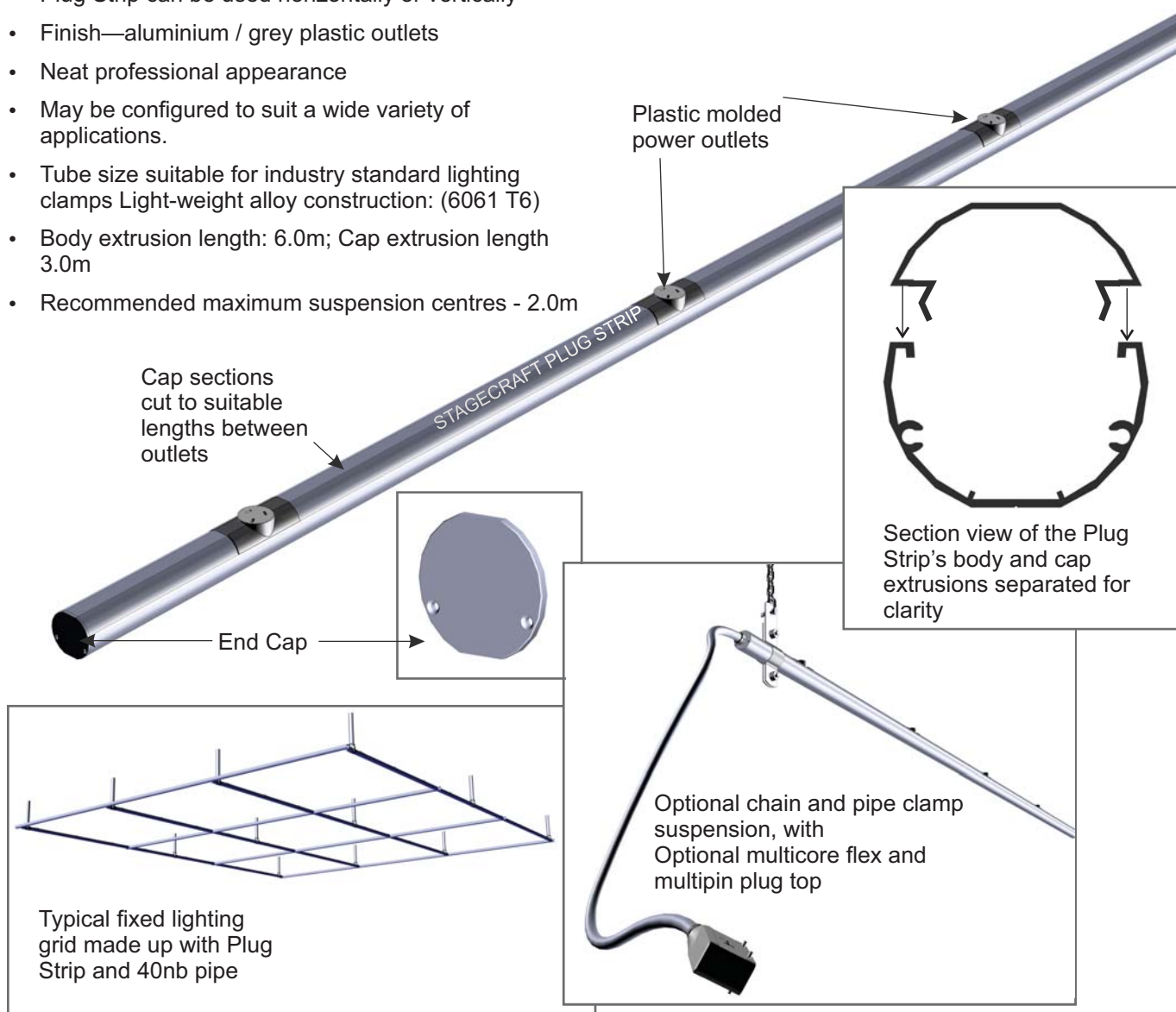
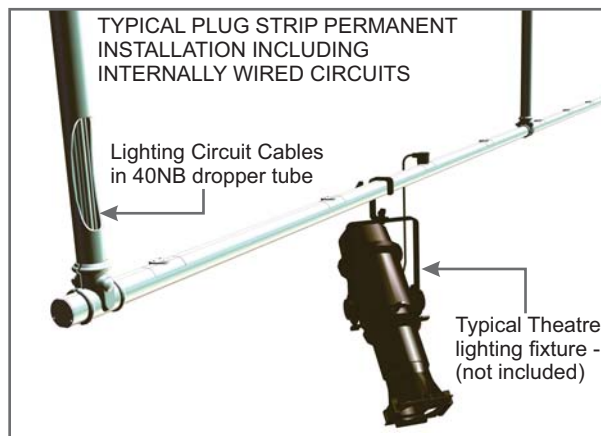
PRODUCT SHEET

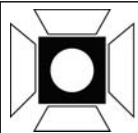
DESCRIPTION

The STAGECRAFT Plug Strip (Circuit Tube) is a simple and effective solution for the support and circuit distribution for stage lighting fixtures in small theatres, studios and exhibition spaces.

FEATURES

- The Plug Strip System can be utilized for both permanent and temporary installation.
- Plug Strip can be ordered made-up to your requirements, or as components to be cut to length and assembled on-site
- In all cases Plug Strip is supplied without wiring, and must be wired by a licensed electrician on-site.
- Plug Strip can be used horizontally or vertically
- Finish—aluminium / grey plastic outlets
- Neat professional appearance
- May be configured to suit a wide variety of applications.
- Tube size suitable for industry standard lighting clamps Light-weight alloy construction: (6061 T6)
- Body extrusion length: 6.0m; Cap extrusion length 3.0m
- Recommended maximum suspension centres - 2.0m





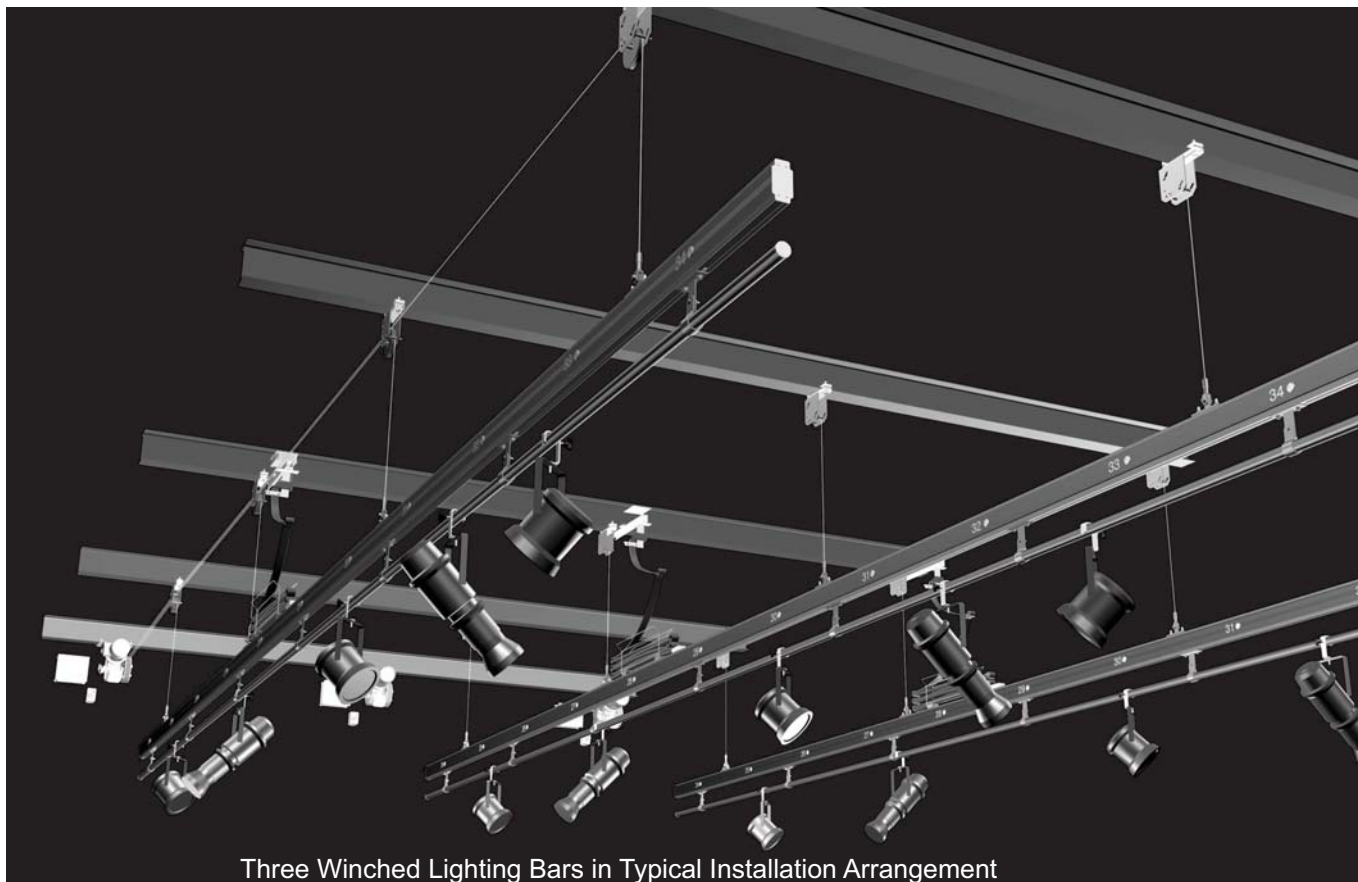
PRODUCT SHEET

DESCRIPTION

The STAGECRAFT Winched Lighting Bar System is ideal for safe and efficient support of stage lighting fixtures in small and medium sized theatres. The system comprises of the elements illustrated below and can be tailored to the specific needs of each installation.

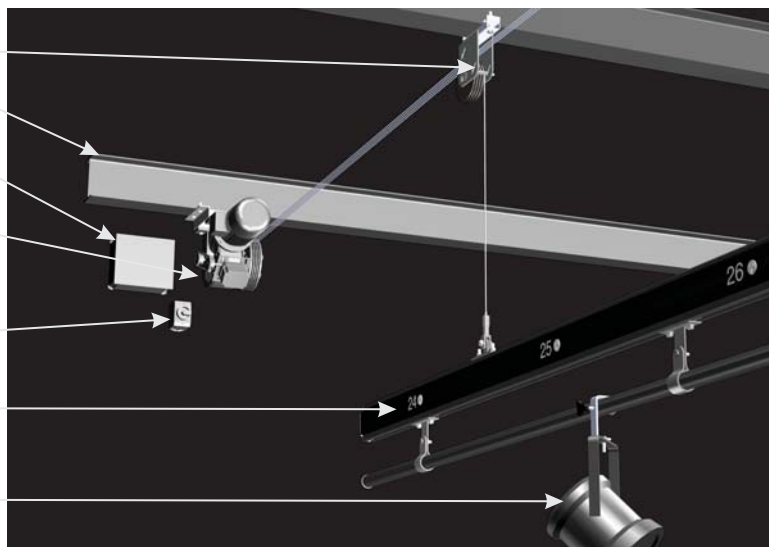
The effective installation of the system requires appropriate support steelwork of the type indicated.

The maximum vertical travel for this type of winch system is 7.0m



Three Winched Lighting Bars in Typical Installation Arrangement

- Loft Pulley Clamped to Loft Steel
- Loft Support Steel (by Builder)
- Variable Frequency Drive (VFD)
- Electric Hoist c/w Pile-Wind Winch Drum
- 15A Single Phase Isolator (No RCD) (by Builder)
- Stagecraft SLX Modular Lighting Bar
- Typical Theatre Luminaire

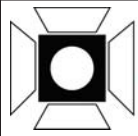


INTEGRATION ADVICE

These hoist systems are governed by the same Australian Standards and WorkSafe recommendation as cranes are and are subject to similar safety rules.

In the design process, consideration must be given to providing effective access to all moving parts for mandatory annual inspections.

Locating any part of the system above a ceiling or in any way that would make inspection difficult should be avoided.



PRODUCT SHEET

DESCRIPTION

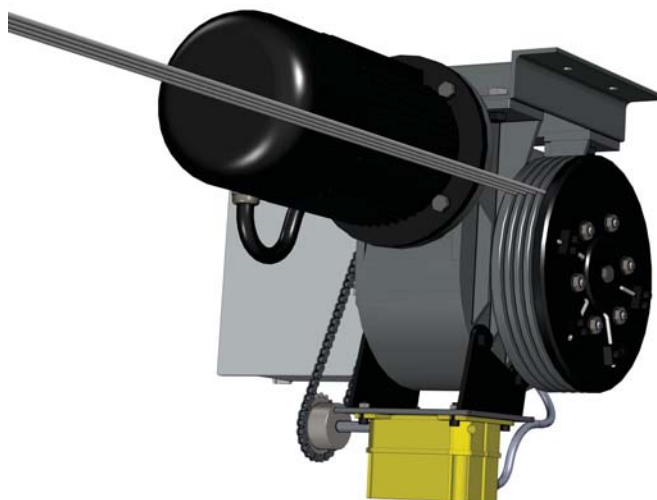
STAGECRAFT Pile winding Winches are designed to provide powered lifting mechanism for lighting bars and other tasks in theatres and studios where inexpensive single-speed hoisting is required. Recommended maximum travel is 6.0 metres.

FEATURES

- Engineered to a high standard
- Upper and lower limit automatic stop mechanism - standard.
- Self-sustaining Italian 80:1 gearbox (Standard model)
- Brake motor
- Many mounting options available
- Multi-cable drums configured to each project's requirement

OPTIONS

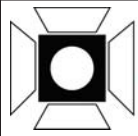
- Larger gearbox/motor combinations available on request
- A number of mounting orientation options available
- Optional Variable Speed Control is available



An example of a four-cable pile-wind winch configured for beam mounting.

COMPLIANCE

- The Motor Control complies with AUS/NZ 34391.2002
- The Hoist Complies with AS 1418.1 - AS 1418.2 - AS 2550.1 - AS 2759.8.3 - AS/NZ 3000:2018



PRODUCT SHEET

DESCRIPTION

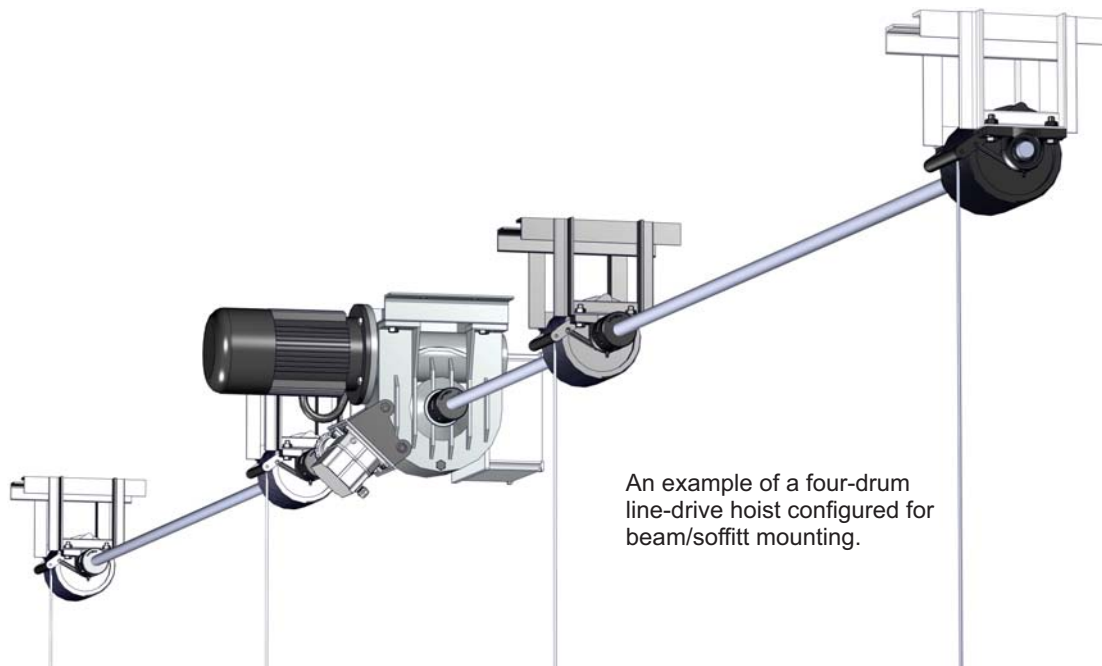
STAGECRAFT Line-Drive Hoists are designed to provide powered lifting mechanism for lighting bars and other tasks in theatres and studios where inexpensive single-speed hoisting is required.

FEATURES

- Engineered to a high standard
- Travel limits – Four cam switched, chain driven, 33:1 ratio. Driven from gear box output shaft.
- 80:1 ratio self-sustaining Italian SITI MU110 gearbox
- Standard Motor – Three phase 1.5kW electric brake motor. With single phase DC electro-magnetic brake.
- Many mounting options available
- Line Shaft – 25mm CS10/30 carbon steel keyed to take chain couplings, mounted on pillow block bearings either side of the hauling drums.
- As many as eight Cable drums may be configured to each project's requirement
- A range of safe working load models available
- Wire rope hauling drums – 150mm diameter high density nylon, keyed to the shaft and grooved to accommodate 4mm 6/19 FSWR appropriate for the designed travel - plus an additional two complete wraps
- Wire rope retaining rollers to each drum. In the event of a slack wire jumping a groove.
- Working load limit of 350kg.

OPTIONS

- Standard units are single speed - Optional Variable Speed Control is available



An example of a four-drum line-drive hoist configured for beam/soffit mounting.

COMPLIANCE

- The Motor Control complies with AUS/NZ 34391.2002
- The Hoist Complies with AUS/NZ 1418.2-1997-Class M3

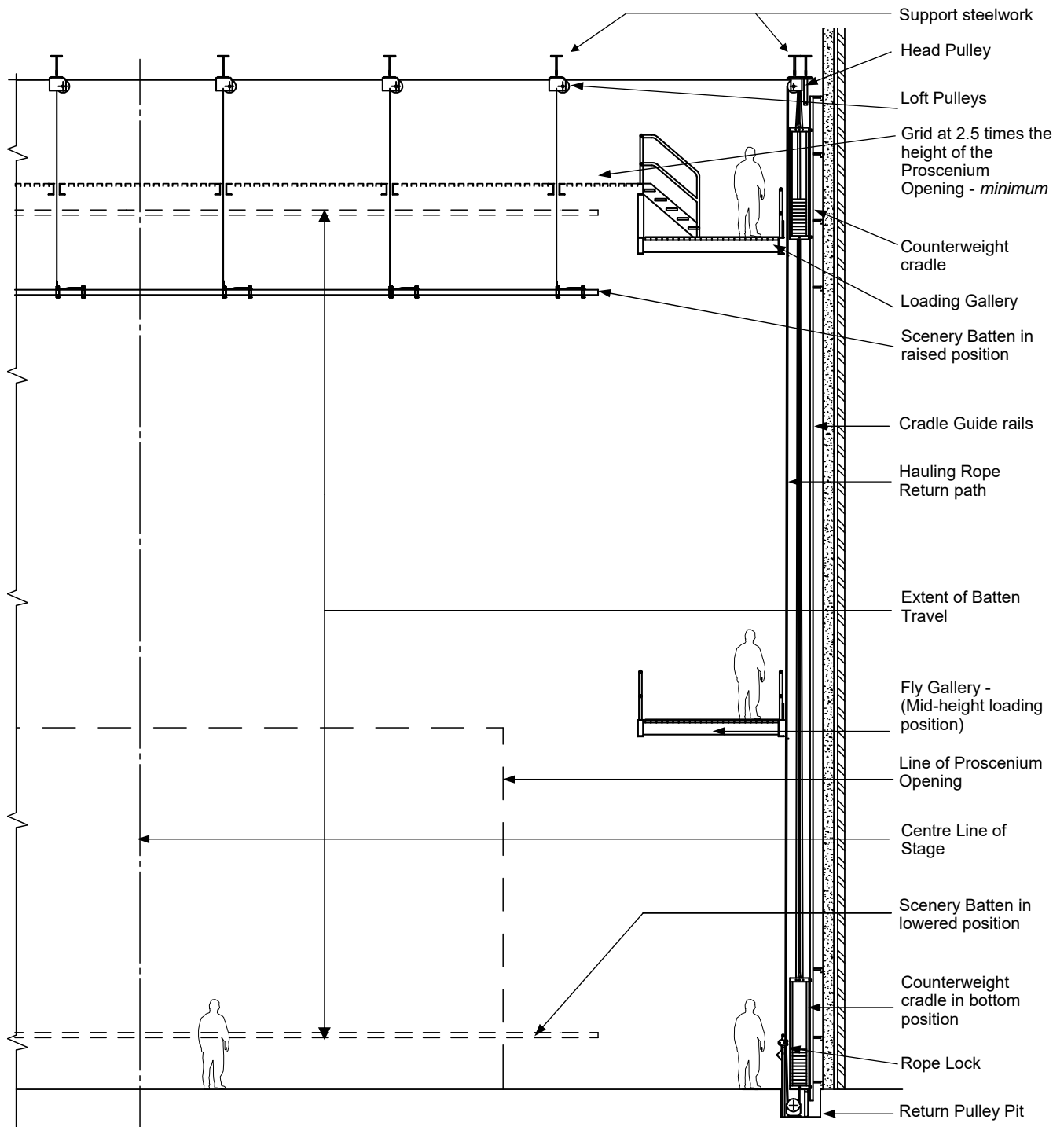


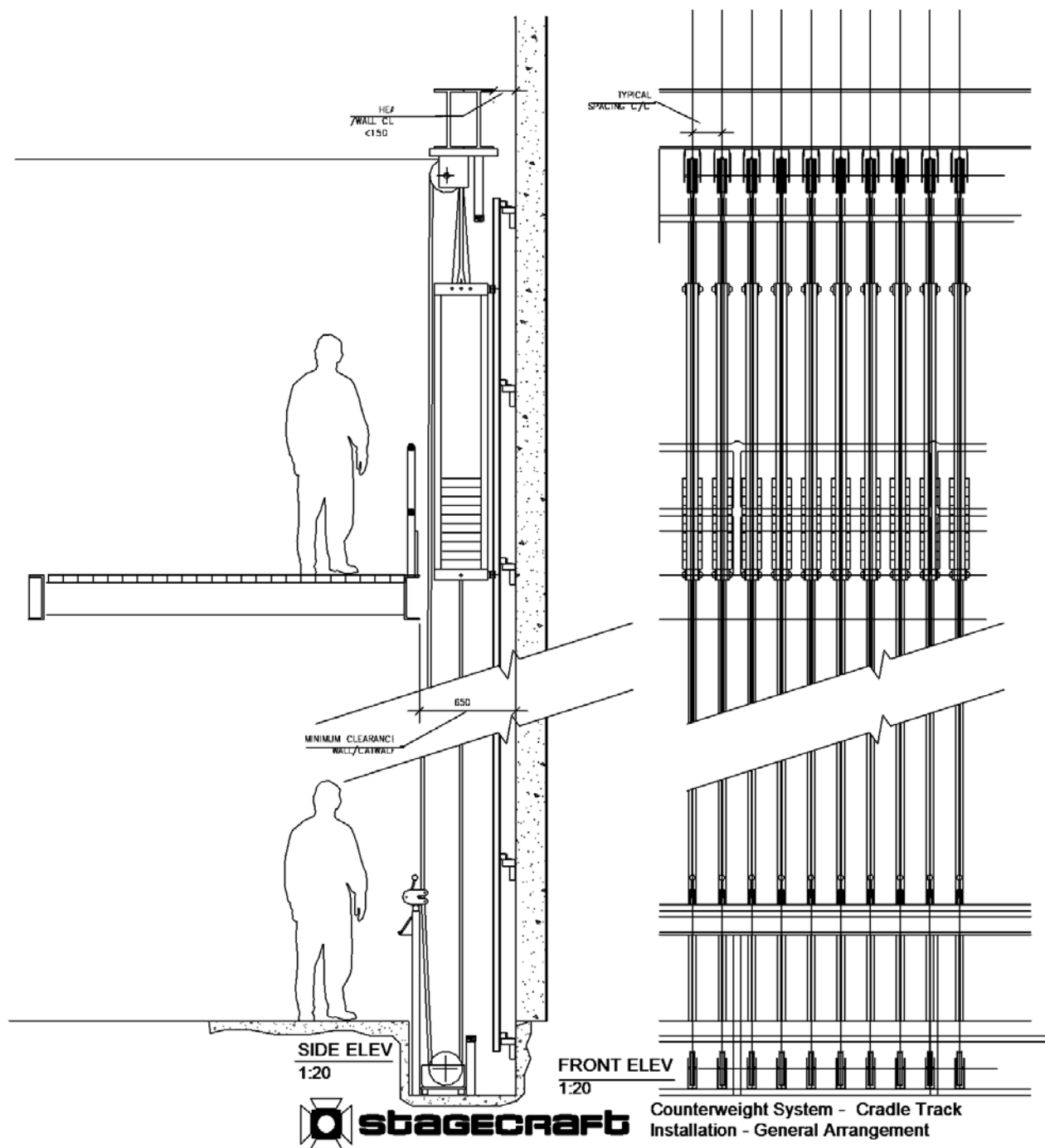
PRODUCT SHEET

DESCRIPTION

The STAGECRAFT Counterweight Flying System is ideal for the scenery, masking and other flying requirement in medium to large theatres.

A typical general arrangement of a single counterweight set is illustrated below.







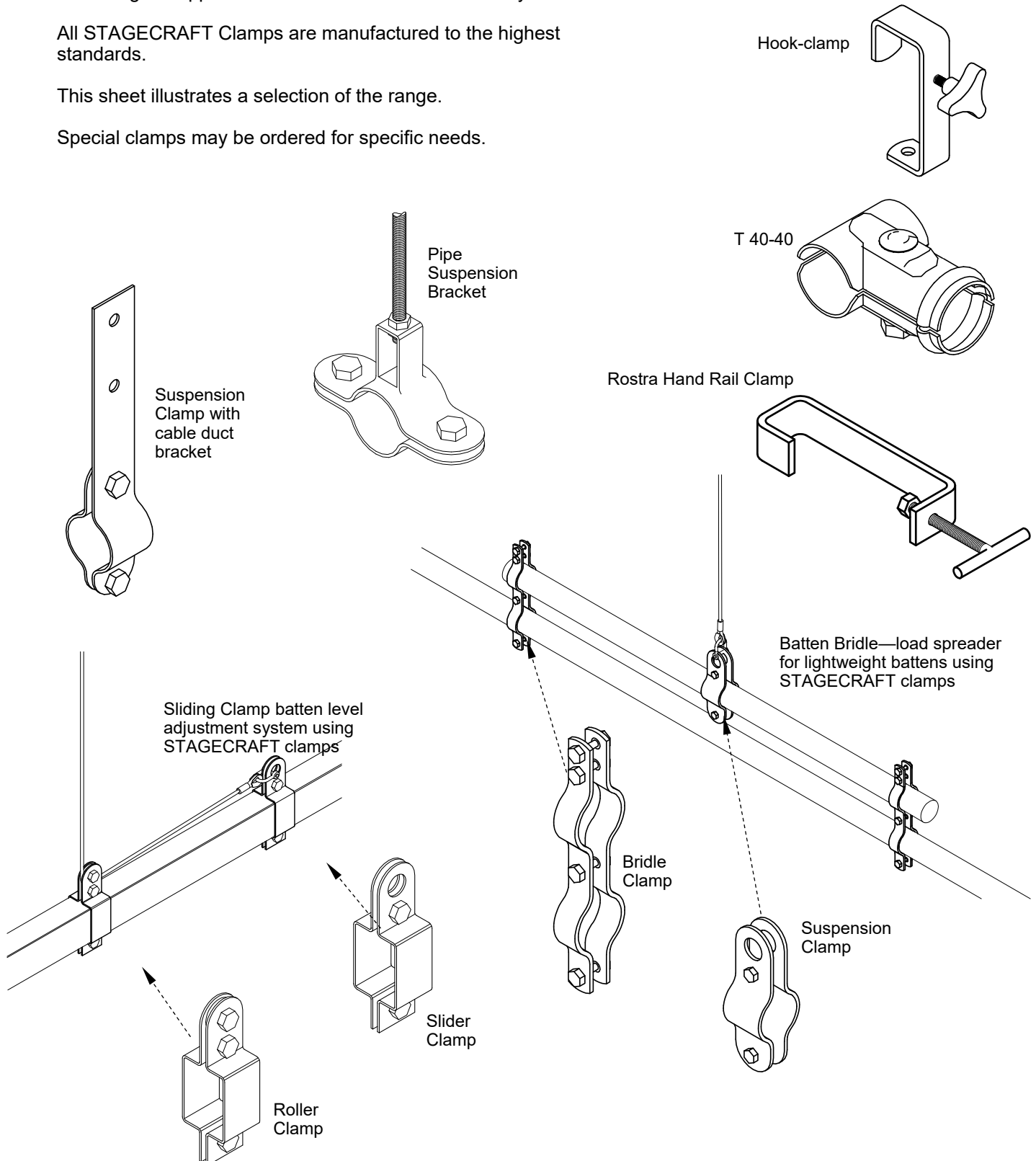
PRODUCT SHEET

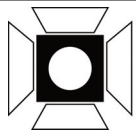
STAGECRAFT manufactures and supplies clamps for a wide range of applications in the entertainment industry.

All STAGECRAFT Clamps are manufactured to the highest standards.

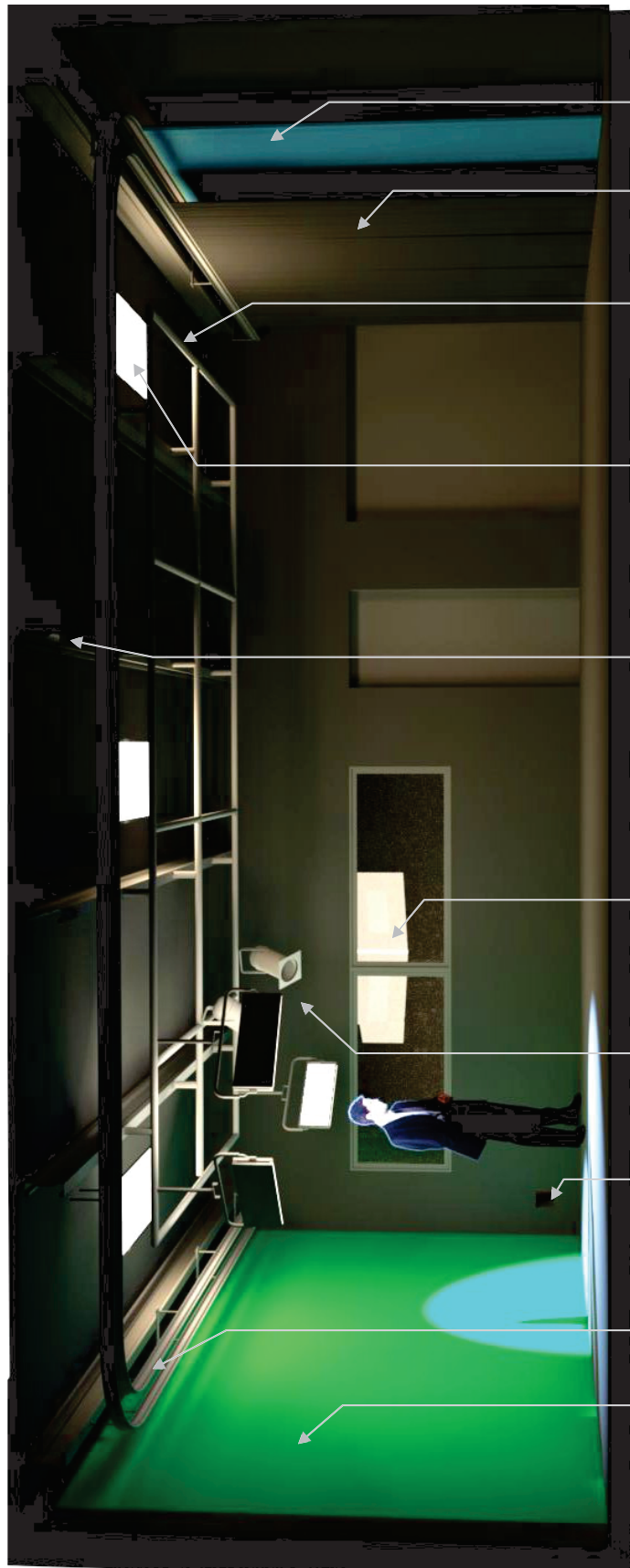
This sheet illustrates a selection of the range.

Special clamps may be ordered for specific needs.





SECONDARY SCHOOL MEDIA STUDIO



- BLACK WOOL DRAPES ON TRACK 1
- RECESSED CEILING MOUNTED FLUORO WORK LIGHTS
- PURLINS OR LIGHT STEEL BEAMS BELOW THE CEILING AT APPROX 1500 CRS TO SUPPORT THE LIGHTING GRID AND CURTAIN TRACKS
- DOUBLE GLAZED WINDOW TO CONTROL ROOM
- CABLE HATCH
- DigiComp® HD GREEN PAINTED WALL SECTION
- TWO PARALLEL CURTAIN TRACKS - STAGECRAFT SERIES 200 EXTRUDED TO THREE SIDES OF THE STUDIO
- TYPICAL STUDIO LIGHTING FIXTURES
- PIPEWORK LIGHTING GRID C/W POWER OUTLETS FOR LED LIGHTING
- ROSCO DigiComp® BLUE FABRIC CURTAIN ON TRACK 2

The Equipment fit-out for a High School Media Studio requires sturdy structural support within the room space.

Ideally the structural support should be several 250x75x3.0 LSB members running parallel with the shorter walls, starting with one at each end 300mm away from the walls and the remainder evenly spaced at approximately 1.5m CRS.

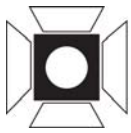
The beams must be below the ceiling to enable the room to be virtually complete before the equipment fit-out commences. The finishes should be dark non-reflective colours.

Dual curtain tracks carry Black Wool Curtains, and a 4.0m wide DigiComp® Blue or Green Fabric curtain.

The wall which will serve as principal background is painted with DigiComp® Blue or Green Paint - This would provide the alternatives of DigiComp® Green and DigiComp® Blue or Black from which to choose for the desired background.

The Fixed Lighting Grid is pre-wired with power and DMX512 lighting control network.

The Media Studio should ideally be a regular shaped space with parallel walls, and around 30.0 m² in area, and with a length and width ratio of not greater than 4:3.



PRODUCT SHEET

DESCRIPTION

STAGECRAFT Patch Panels provide industry standard patching capability where multiple lighting or power circuits have to be temporarily assigned to discrete power supplies (dimmers) individually or in groups.

Construction

Robust black powder coated steel cabinet.

Load Connection

Via DIN connection rail at rear of the housing.

Patch Leads

Each patch lead is a minimum of 1.8 m long and is fitted with a moulded plug adaptor to permit patching to standard theatre lighting dimmer racks

Labeling

Each Patch cable is numbered at the panel and on the plug-top.

Custom Units

STAGECRAFT Patch Panels can be made to customers special requirements

Mounting

STAGECRAFT Patch Panels mount directly to the wall and are designed to support standard portable dimmer racks if required.

Number of Circuits

40, 60, 80 & 100 patchable circuits, with provision for optional G.P.O.s on the face panel.

Capacity

Maximum 10 amps per circuit (2.4 kW approx.)

Dimensions

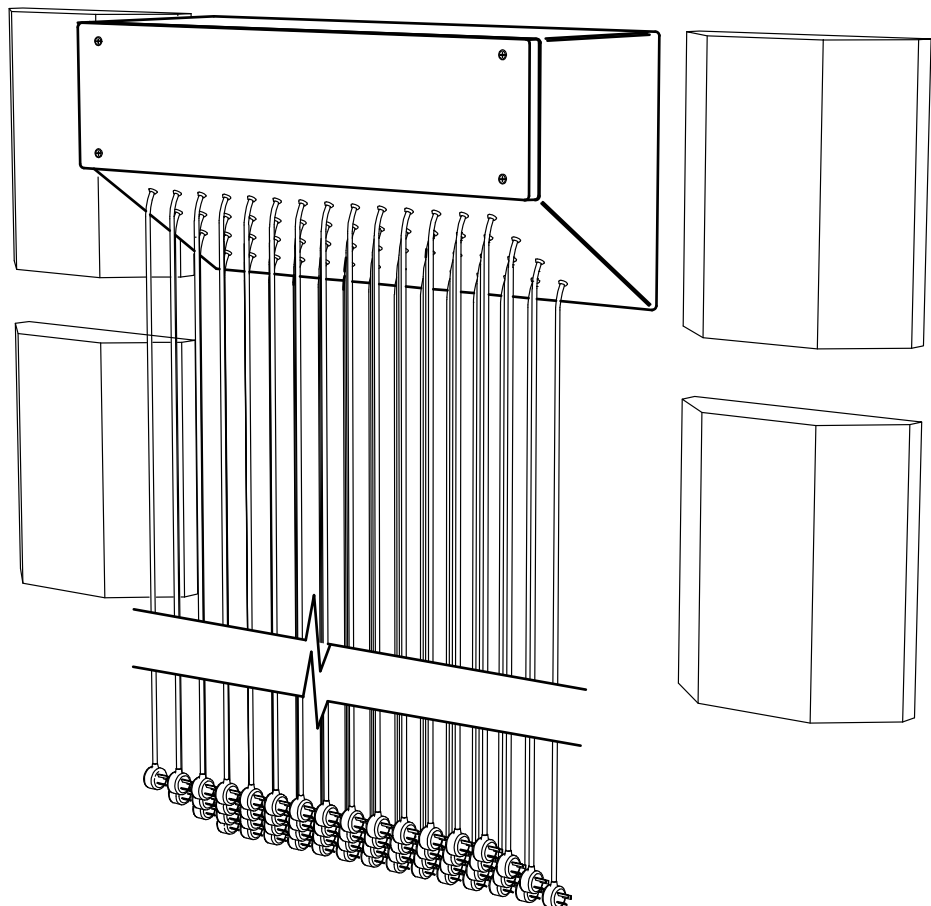
Height: 465 mm

Depth: 325 mm

Width: 60, 80 & 100 circuit — 1000 mm

40 circuit — 600 mm

Typical 60 circuit STAGECRAFT
Patch Panel with 4 wall mounted
theatre lighting dimmer racks





PRODUCT SHEET

DESCRIPTION

STAGECRAFT Stage Boxes are ideal for all theatre, studio, exhibition space applications where flush / recessed floor access to electrical and AV services is required.

The STAGECRAFT Stage Boxes are manufactured in two standard sizes in steel.

The hinged lids are fabricated in 6mm steel and are flush to the stage when closed.

Reinforced flanges provide robust outer frames that can withstand heavy traffic loads. Sheet steel boxes may be drilled in any configuration for cable entry as required.

DIMENSIONS

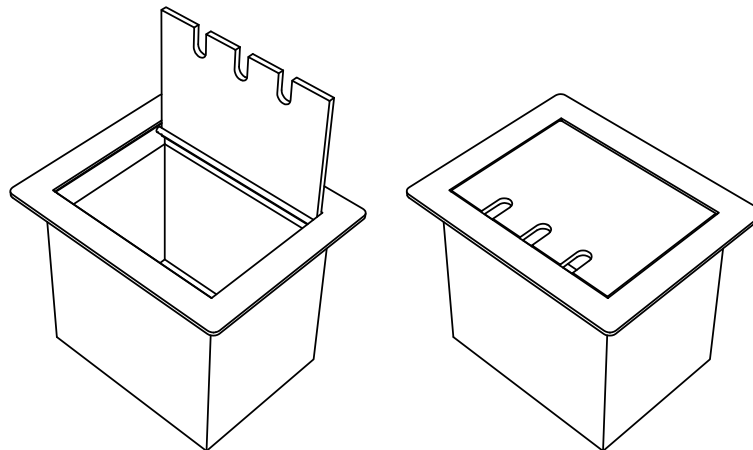
Small:

Lid dimensions	150 x 200 mm
Overall dimensions	215 x 260 x 210 mm deep

Large:

Lid dimensions	190 x 240 mm
Overall dimensions	250 x 300 x 210 mm deep

Finish: Black paint

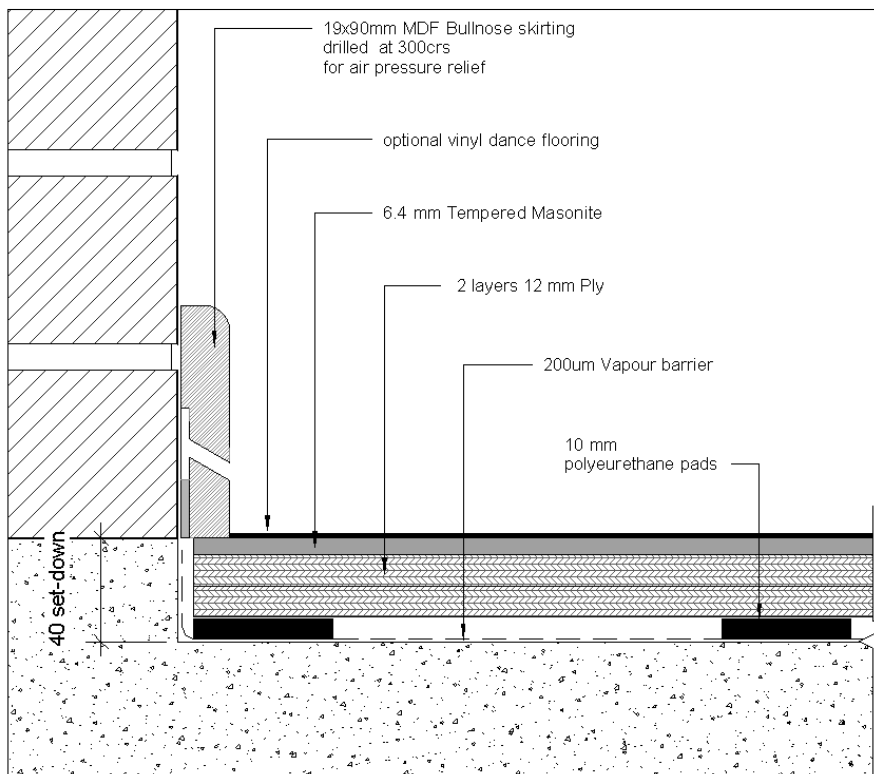
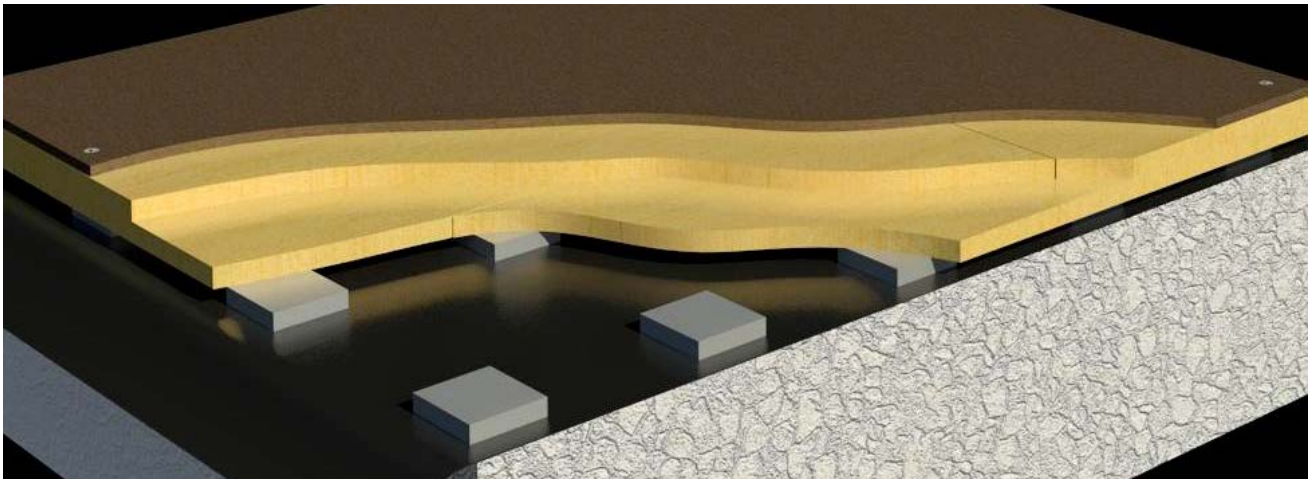


PRODUCT SHEET

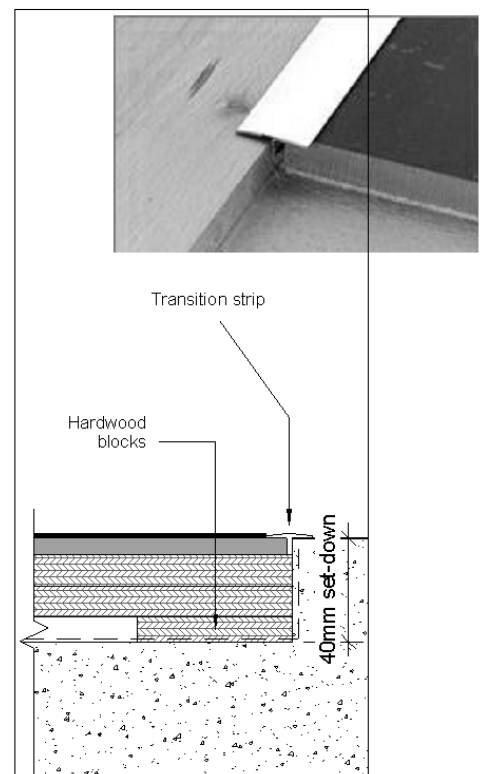
The **STAGECRAFT AIR-FLO** floor system provides an economical, hard-wearing dance and drama surface which can be installed in new or retrofit situations.

By an **AirFlo** floor absorb shocks, enhancing performance and greatly reducing the chance of injuries. Such floors are the most desirable for dance, drama, indoor sports and physical education.

- May be installed on any flat and level surface
- May be painted / repainted to any colour
- Worn or damaged areas of the top layer may be easily replaced



Edge Detail at Wall



Edge Detail at Threshold

STAGECRAFT **AirFlo** floor system when installed in new buildings requires a 40mm set-down to make it level with surrounding floor



DESCRIPTION

The STAGECRAFT Rostra System is ideal for when robust, neat, demountable / transportable staging is required.

The STAGECRAFT Rostra System is comprised of:

- folding bases in three standard heights,
- carpeted plywood tops,
- side and end hand rails,
- skirting
- chair rails,
- access steps, and
- storage dollies.

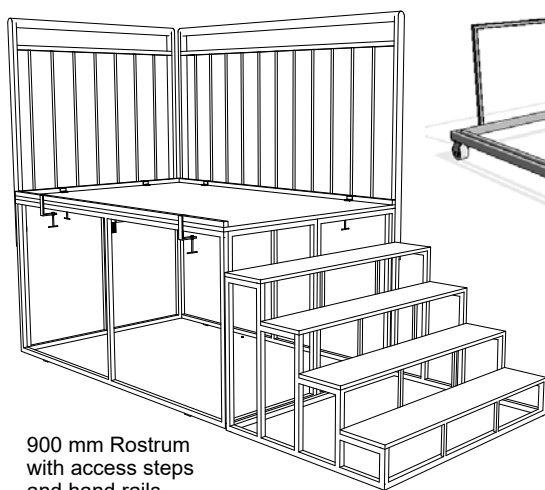
The simple but sturdy steel bases fold flat for compact storage and transport

- Standard rostra tops: 1200 mm x 1800 mm
- Standard heights: 300 mm, 600 mm, and 900 mm.
- 1200 mm wide access steps to suit each standard rostrum height
- The hand rails: 1000 mm high (above rostrum top) with a choice of 1200 mm or 1800 mm wide.

FEATURES

The STAGECRAFT Rostra System staging features:

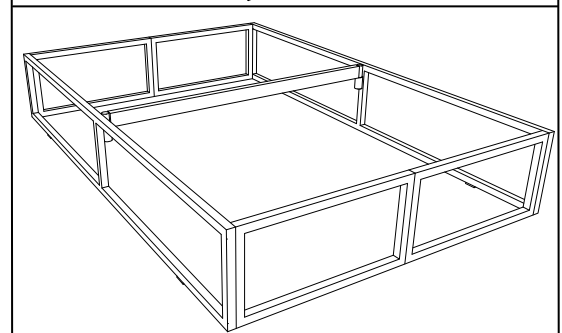
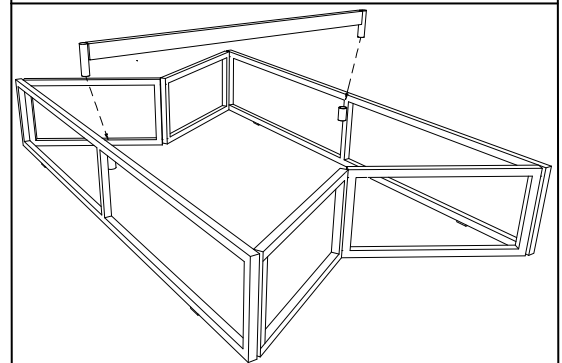
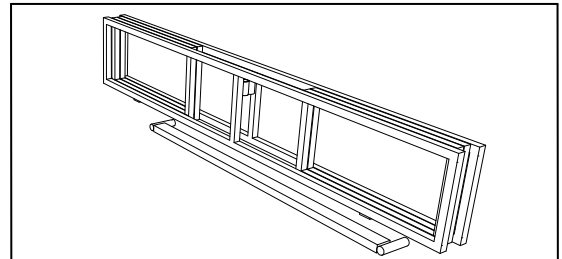
- All steelwork finished - black painted.
- Rostrum tops finished with non-fray hard wearing carpet
- Quick and easy erection needing no tools
- Smart professional appearance
- Special sizes made to order
- Storage Dollies made to suit individual rostra set.



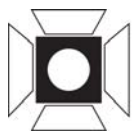
900 mm Rostrum
with access steps
and hand rails



Dolly



Typical 300 mm high rostrum with carpeted top, hand-rails and chair rail.



stagecraft
Pty Ltd
Entertainment Engineering

Rostrum Dolly

PRODUCT SHEET

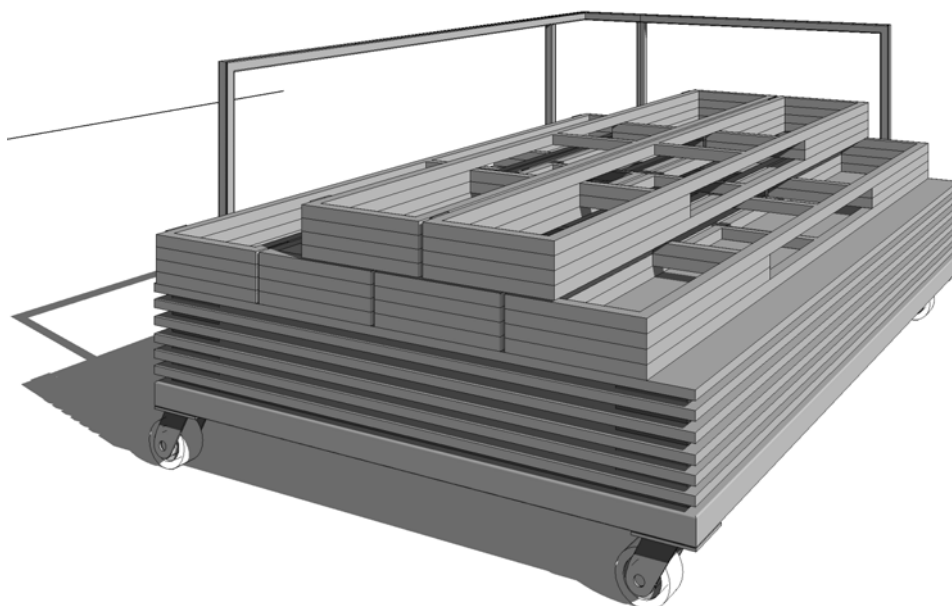
DESCRIPTION

The STAGECRAFT Rostrum Dolly is designed to store and move Stagecraft 1200x 1800 system Rostra.

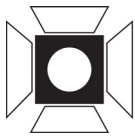
The simple but sturdy construction with industrial quality swivel castors, makes moving up to eight 300 high rostra a breeze.



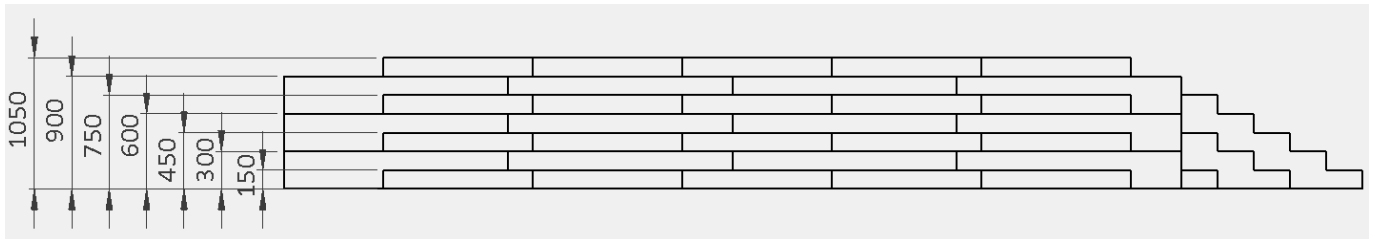
Dolly



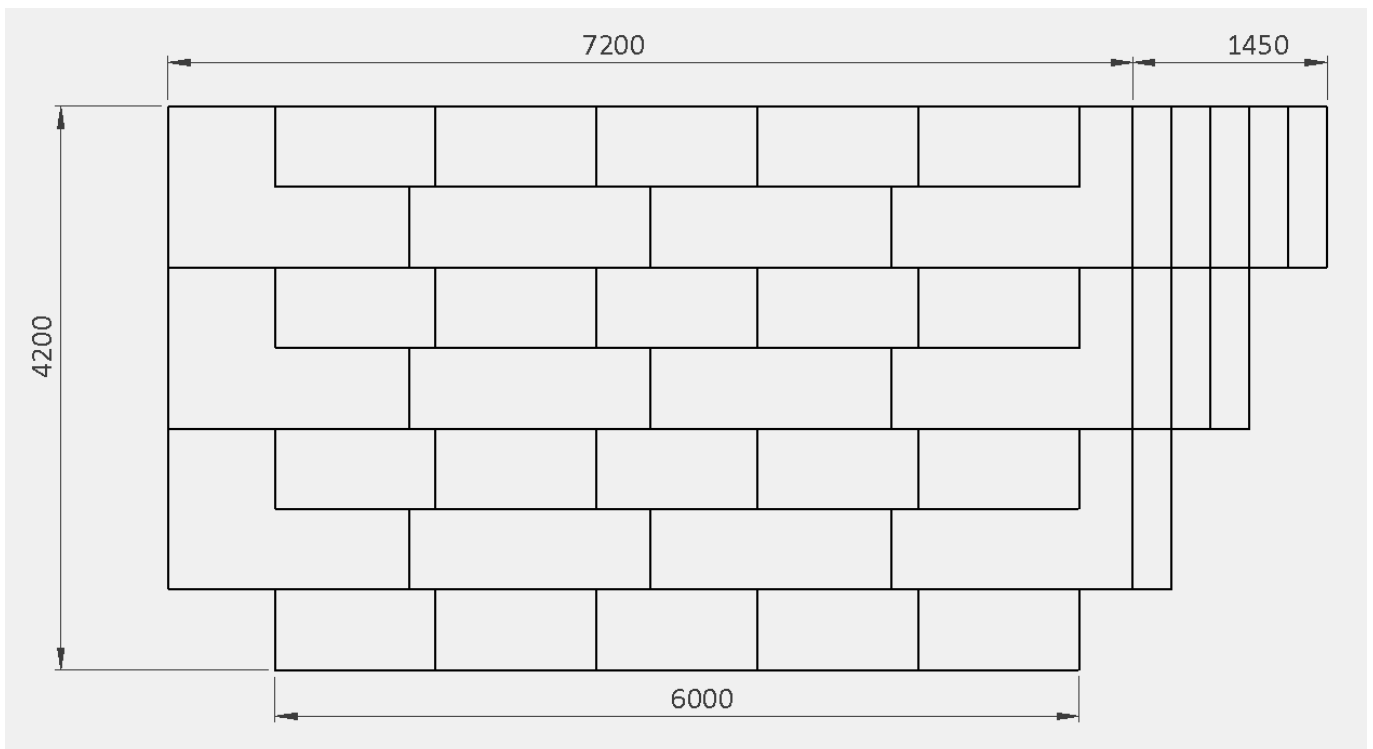
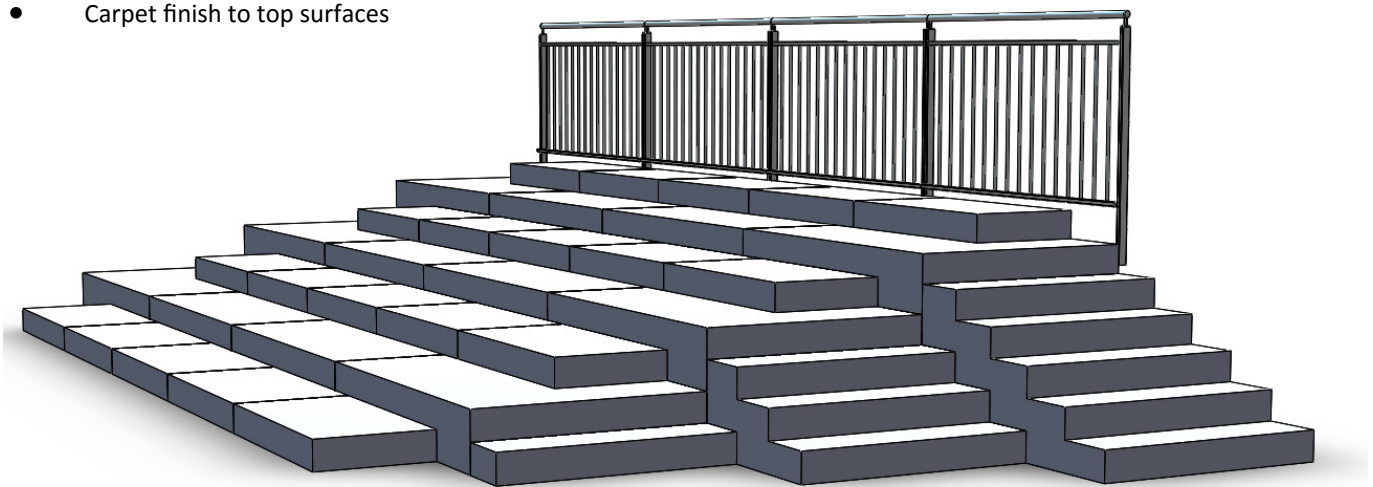
Dolly loaded with six 300 high x 1200x1800 Stagecraft Rostra



PRODUCT SHEET



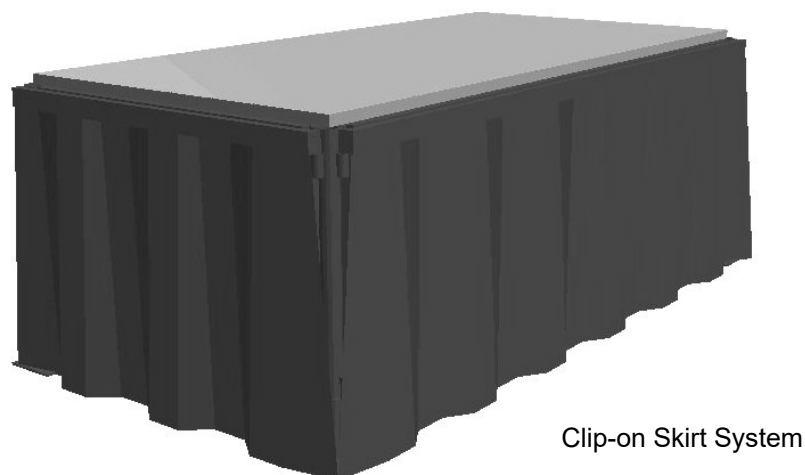
- Supports up to 125 Choristers
- Large elements fold flat for storage and transporting
- Carpet finish to top surfaces



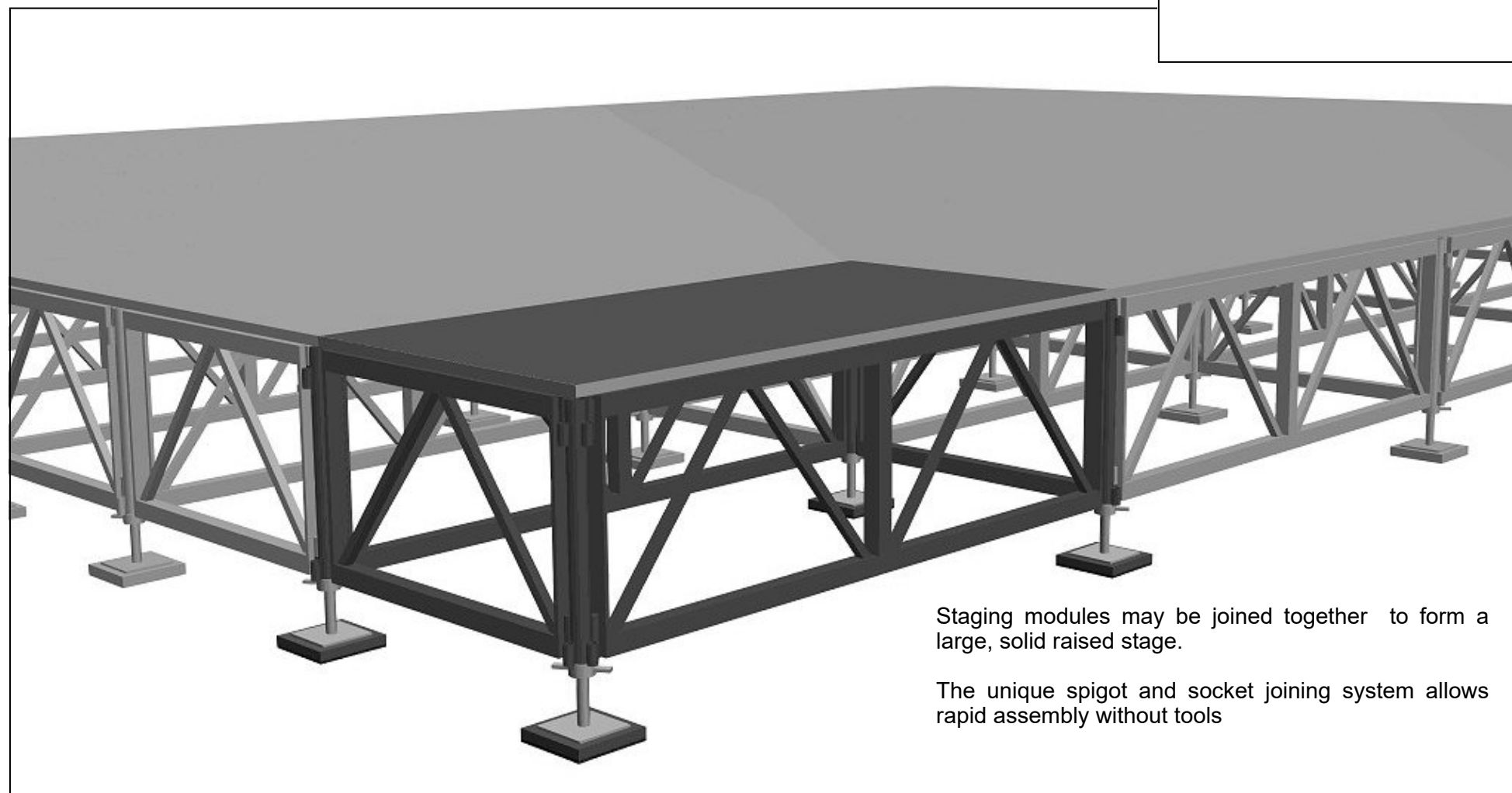
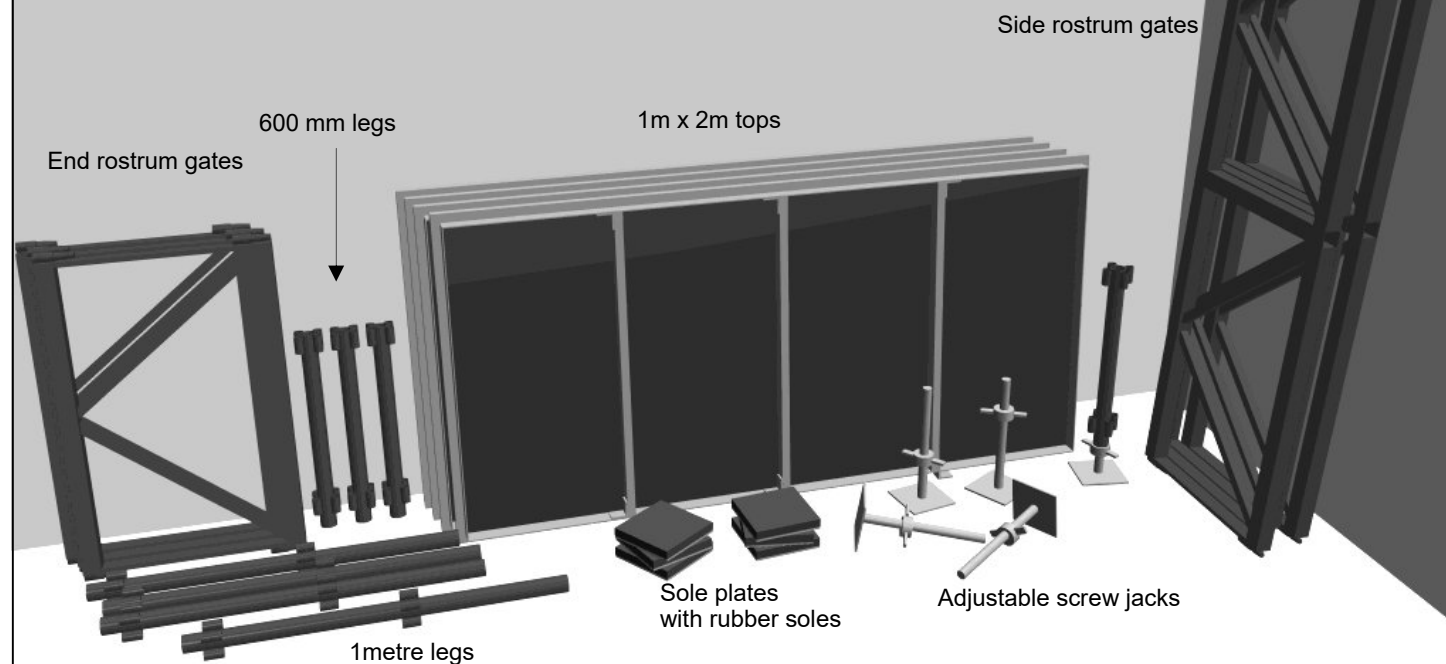
MODULAR STAGE SYSTEM

The Stagecraft Modular Stage System is designed to meet the most stringent requirements for entertainment and event presentation. Strong and stable enough to support heavy loads — even motor vehicles, and yet its modular design and accessories provides many choices of configurations.

Steel “gate frames” attach to legs using a spigot and socket system to form strong base frame. The plywood tops are reinforced and have an extruded aluminium edge frame which provides positive location to the base frame resulting in a strong and rigid unit.



Examples of Stagecraft Modular Staging System component ready for assembly



Accessories include:

- clip-on skirt system,
- access stairs,
- modular ramps and
- storage trolleys.



PRODUCT SHEET

DESCRIPTION

The STAGECRAFT Portable Wardrobe Rack is designed to provide robust, lightweight simple-to-assemble auxiliary costume hanging for touring shows, backstage quick-change, fashion parades etc.

FEATURES

- Absolute simplicity—only two component types; upright and rail.
- No tools required for set-up or disassembly
- Unique four-way rail attachment providing a wide range of set-up options
- Ability to double as room divider screens (with the addition of drapes—not included)
- Strong welded steel construction
- Finish—painted black

DIMENSIONS

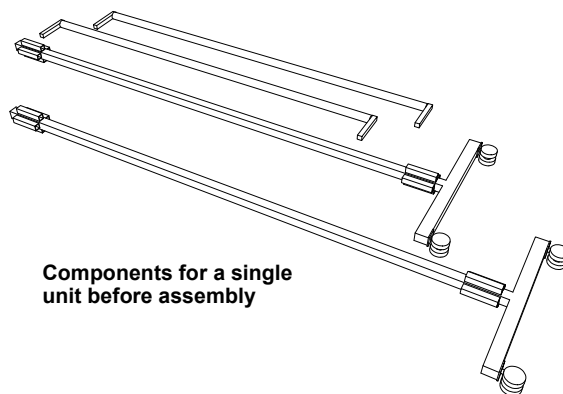
One unit Assembled

Height 1800 mm

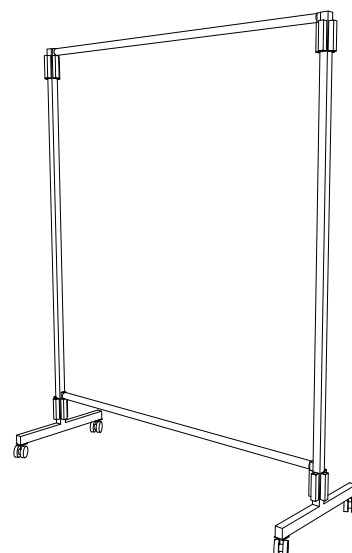
Width 1400 mm

Depth 500 mm

Hanging rail diameter 30 mm

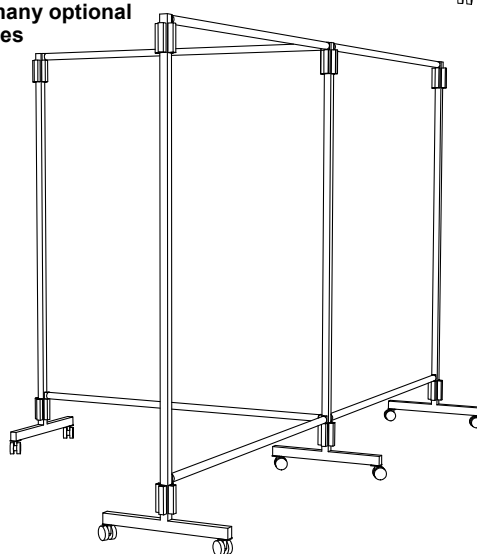


Components for a single unit before assembly



A single unit assembled

An example of the many optional assembly possibilities





PRODUCT SHEET

DESCRIPTION

The STAGECRAFT Exhibition Barrier System provides a flexible and efficient answer to a range of temporary barrier requirements at exhibitions and similar events.

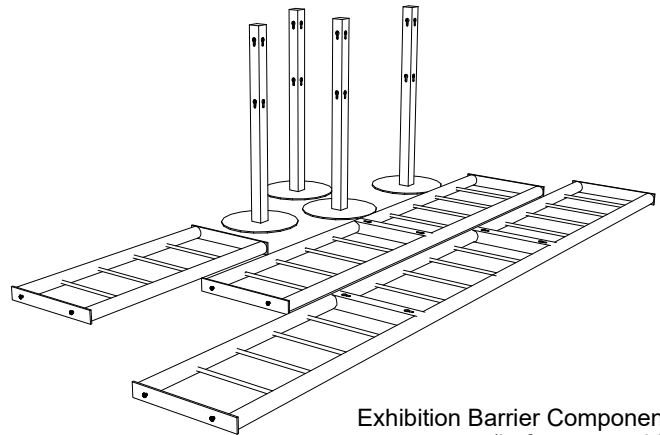
The system comprises of a choice three lengths for the horizontal panels, and a universal stanchion. The larger two of the horizontal panels have additional fixing points that enable a wide choice of layout options.

DIMENSIONS

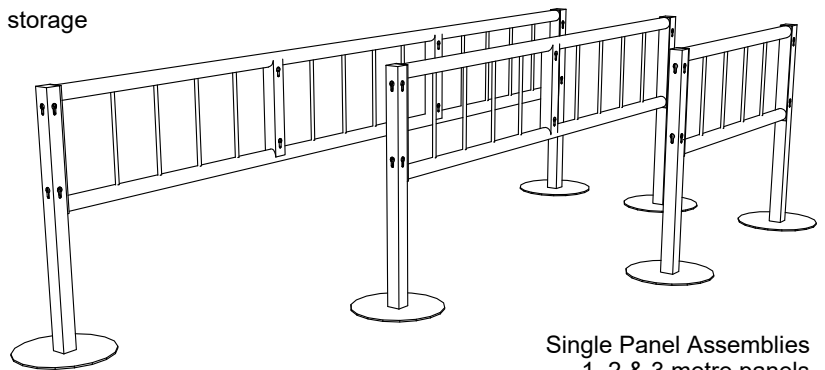
Panel widths — 1 metre, 2 metre & 3 metre
Overall Height — 850 mm

FEATURES

- Lightweight and compact — easy handling and storage
- Robust — welded steel construction
- Easy to assemble — no tools required
- Finish — black painted
- Neat, professional appearance
- Ideal for supporting signage

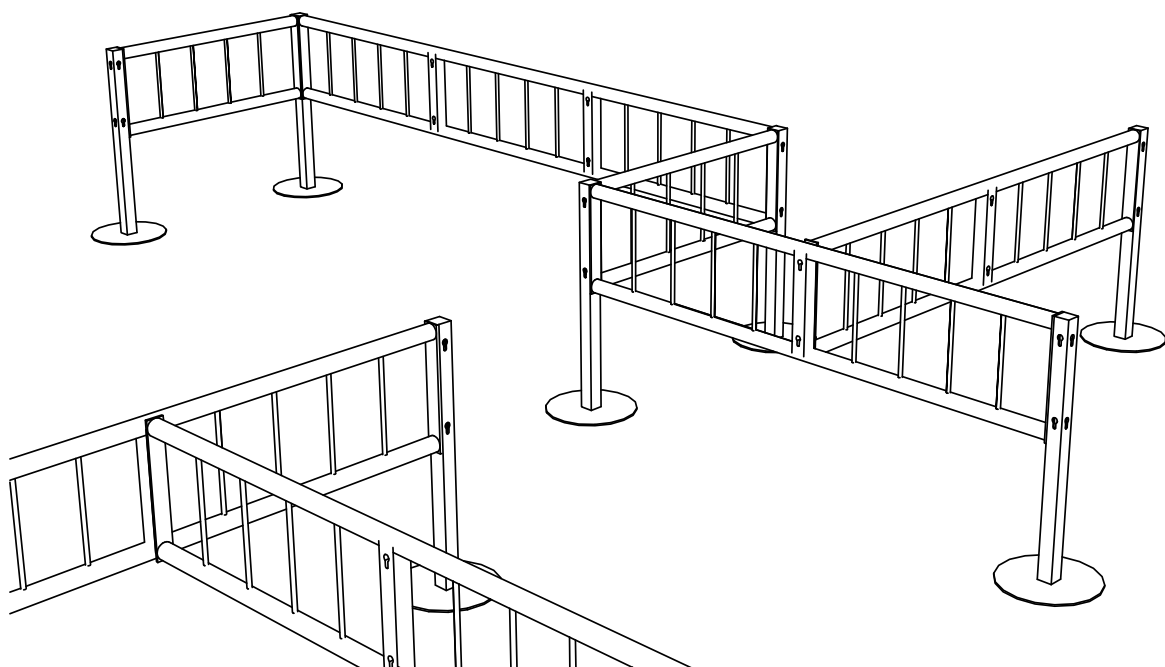


Exhibition Barrier Components
(before assembly)



Single Panel Assemblies
1, 2 & 3 metre panels

Examples of assemble options



stagecraft



SCIKR 000-11/14

STAGECRAFT PTY LTD, ABN 11 009 040 144

11 INVERNESS STREET, MALAGA, WESTERN AUSTRALIA 6090

PHONE +61 8 9249 2700 FAX +61 8 9249 2709

All specifications may be changed without prior notice. While due diligence is used in compiling the data herein, Stagecraft Pty Ltd does not accept liability for losses ensuing from any errors or omissions.







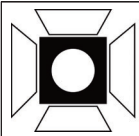
Barrier Panel Dolly



Stanchions on Dolly



Typical Exhibition Barrier deployment



INSTALLED BARRES

All STAGECRAFT Ballet Bars use 50mm Tasmanian Oak - finely sanded and finished in satin epoxy clear laquer.

Metal parts are powder coated to the colour of your choice.

All our barres are made to order.

The required height for ballet barres is variable depending on a range of factors, however, our standard height is 1.0m

A secondary bar standard height is 785mm.

The height(s) should be discussed when ordering.

Portable Barres are also available.

Model:16BF1

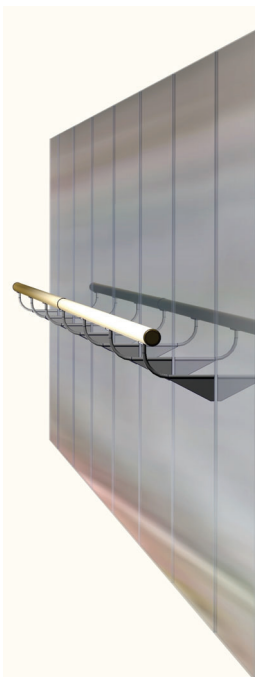
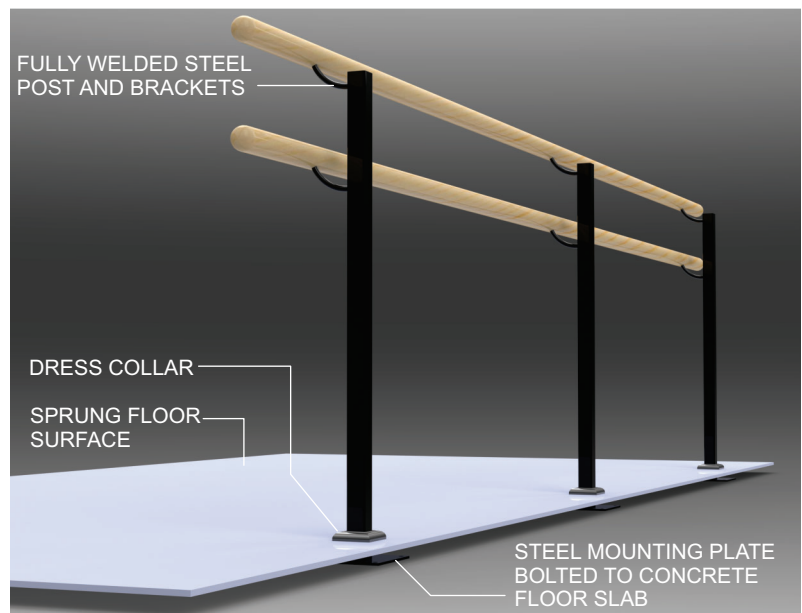
Single Barre - Floor Mounted Stanchions

Installation of floor mounted barres requires the base plates to be securely bolted to the concrete slab below the finished timber floor.



Model:16BF2

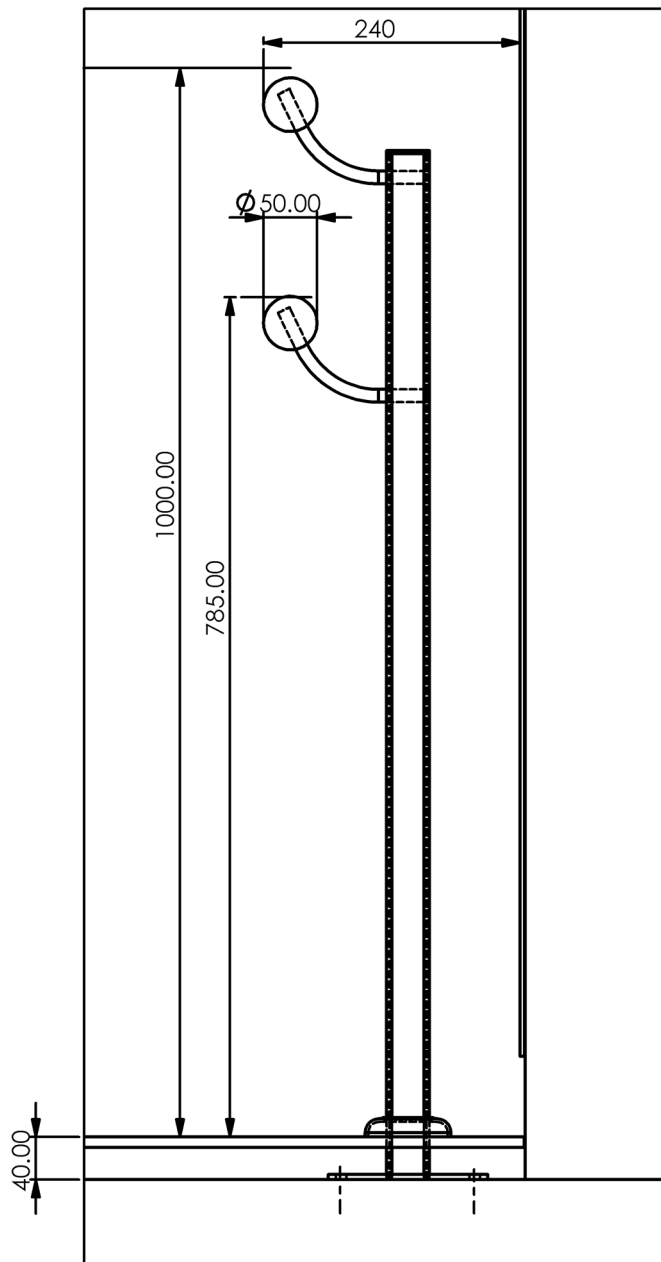
Double Barre - Floor Mounted Stanchions



Model:16BW

Single Barre - Wall/Mirror Mounted

Mounting barres on a wall in conjunction with a mirror requires careful planning as additional strengthening of the wall will probably be required.



OPTIONAL
SECOND BARRE

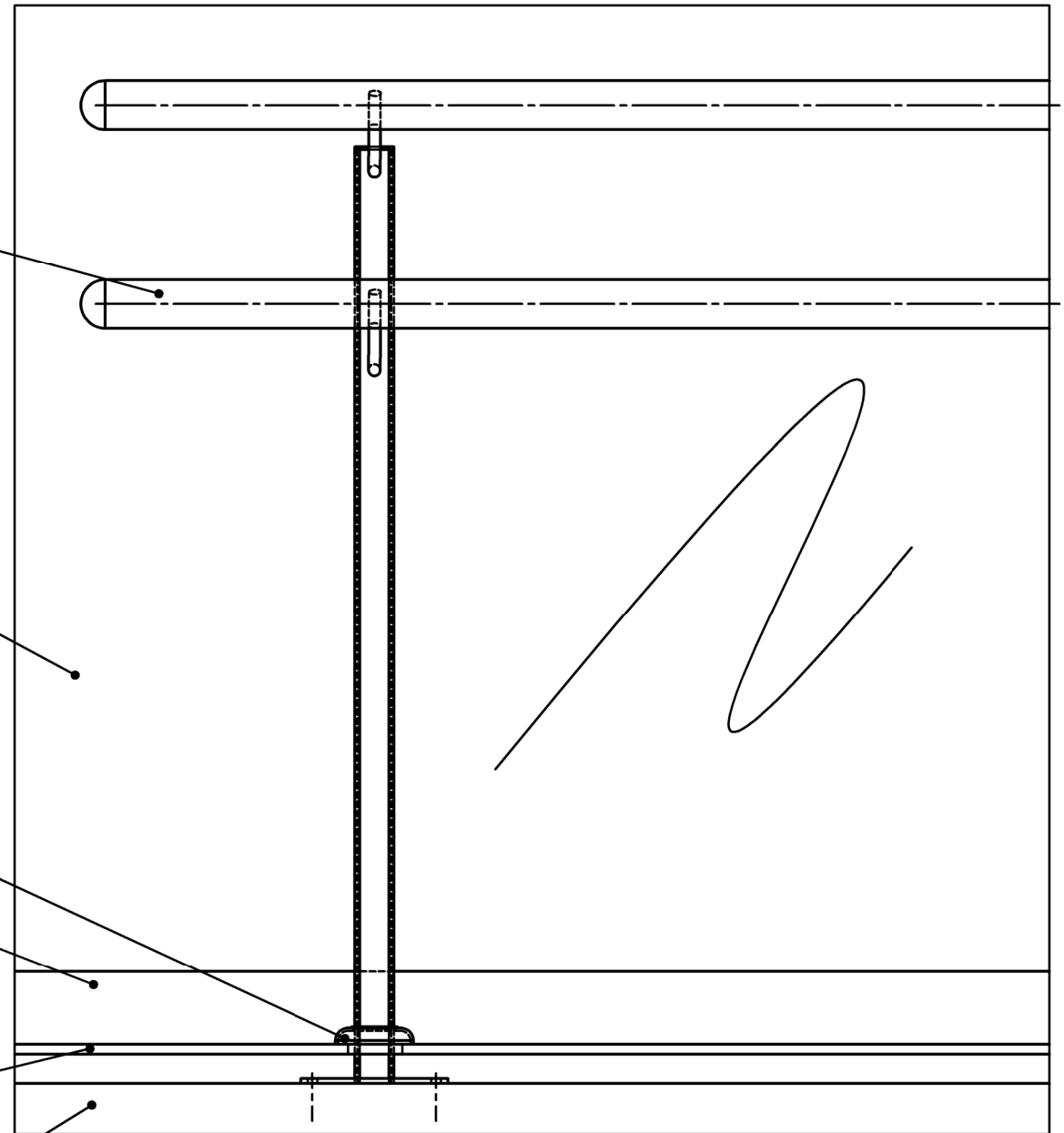
MIRROR

DRESS
COLLAR

SKIRTING

SPRUNG
FLOOR

CONCRETE
FLOOR
SLAB



FLOOR MOUNTED BALLET BARRE GENERAL ARRANGEMENT

Job:

STAGECRAFT PTY LTD www.stagecraft.com.au
ABN 11 009 040 144
11 INVERNESS STREET, MALAGA, WESTERN AUSTRALIA 6090
PHONE +61 8 9249 2700 FAX +61 8 9249 2709

SCALE:1:5	A3	DWG NO.
MATERIAL:	REVISION	
WEIGHT:	SHEET 1 OF 1	