

PRODUCT SHEET

DESCRIPTION

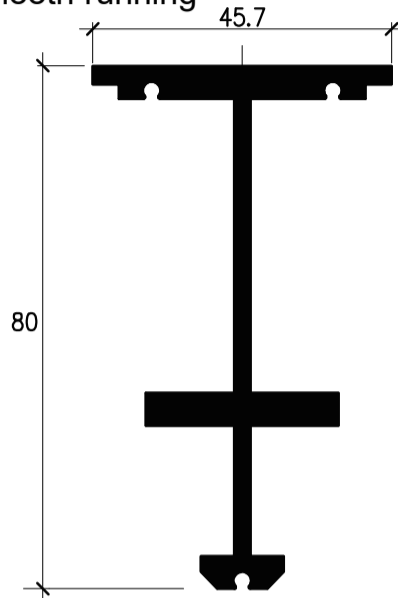
The STAGECRAFT 200 Series Studio Track System is ideal for studio and theatre applications where robust, smooth running tracking is required.

The system may be operated via:

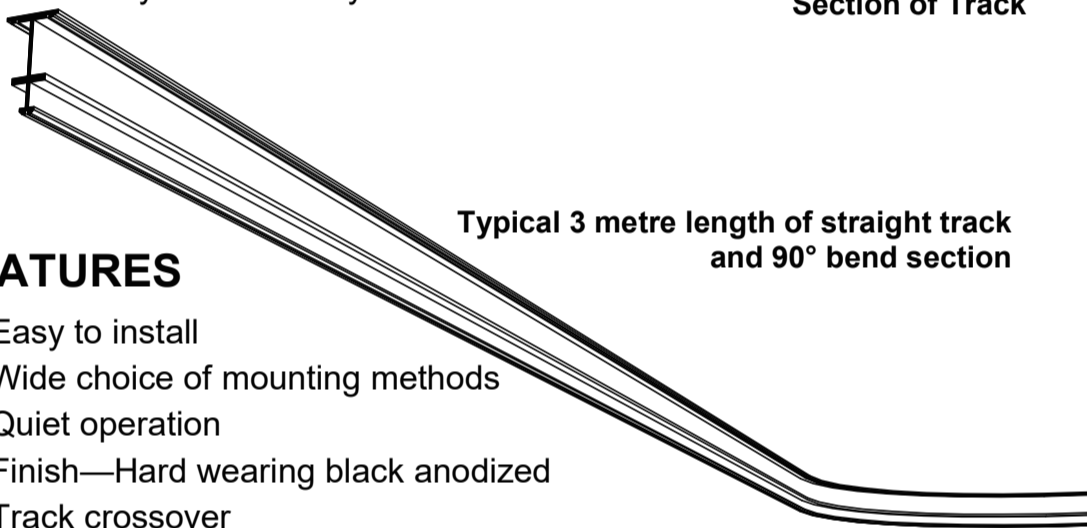
- Walk-along,
- Manual hauling line
- Motor driven

The Studio Track System may be configured as:

- Single track,
- Continuous Loop
- Dual track
- Overlapping, or
- In a variety of custom layouts



Section of Track

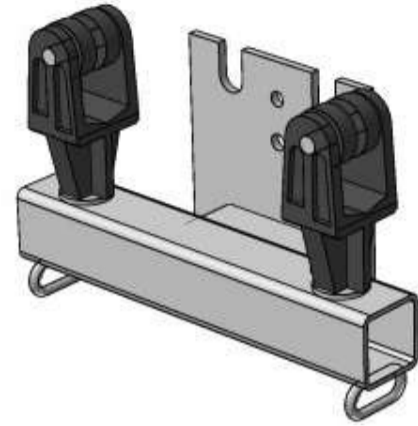


Typical 3 metre length of straight track and 90° bend section

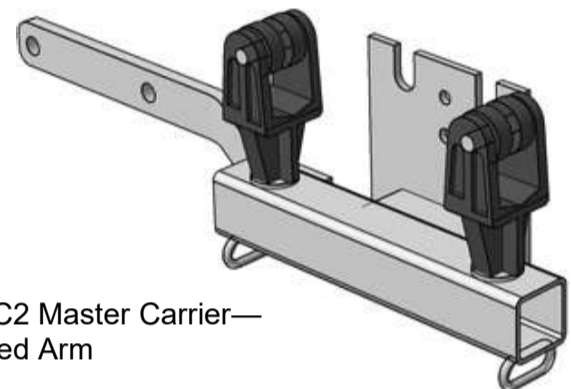
FEATURES

- Easy to install
- Wide choice of mounting methods
- Quiet operation
- Finish—Hard wearing black anodized
- Track crossover
- 90° corners standard, other angles available to order
- Corners from 400 mm radius
- Standard track lengths 6 metres, other lengths to order
- Special mounting and custom layouts available.

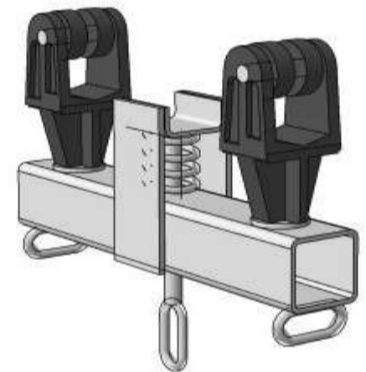
Selected Components & Accessories



200MC1 Master carrier



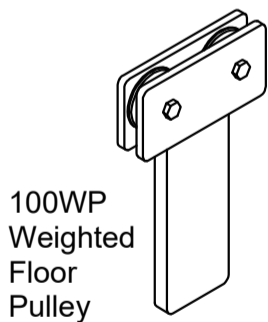
200MC2 Master Carrier—Cranked Arm



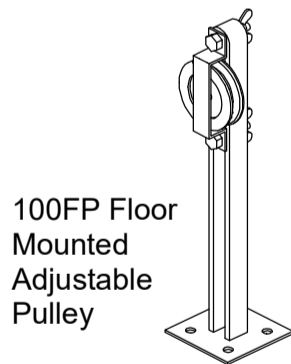
200MC3 Master Carrier with Brake



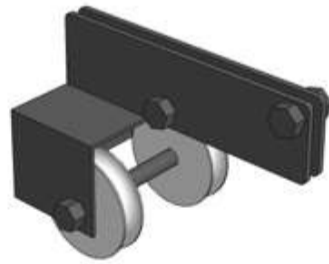
200LG Outside Line Guide



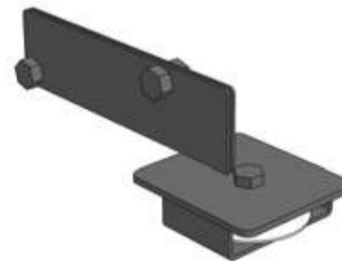
100WP Weighted Floor Pulley



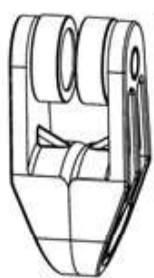
100FP Floor Mounted Adjustable Pulley



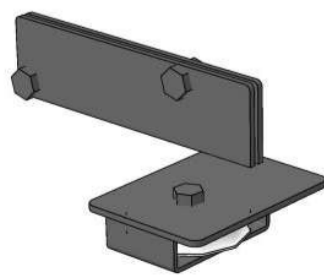
200HP Head Pulley



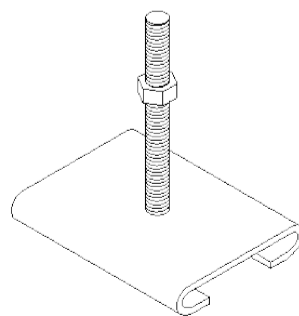
200RP Return Pulley



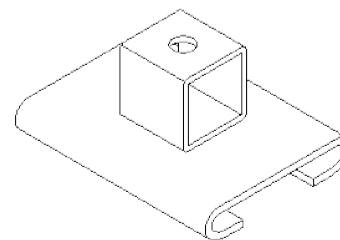
200SC Single Carrier



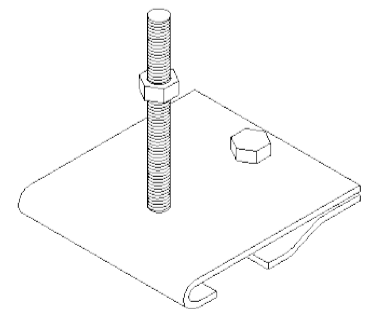
200RP2 Return Pulley—Overlapped Track



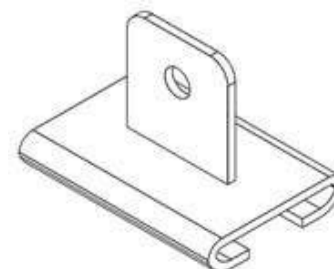
200TF1 Top Fix Clamp 8 mm Stud



200TF2 Top Fix Clamp - Mounting Block



200TF3 Top Fix Clamp - 2 Piece with Stud



200TF4 Top Fix Clamp - Vertical parallel plate with hole